



BLENDDED INTENSIVE PROGRAMMES



Blended Intensive Programmes (BIPs)

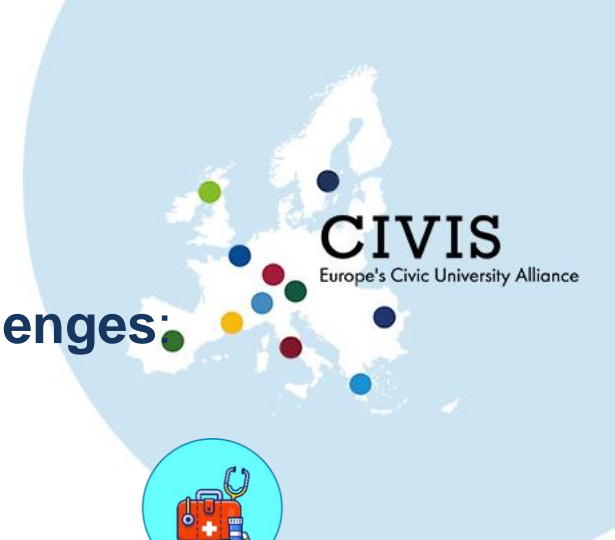


BIP ERASMUS +

- An **intensive programme with blended mobility**
- It combines **physical mobility** with **virtual mobility**
- Students will spend **5 days** at a partner university with students from across the CIVIS Alliance
- organised and taught by academics of **three or more CIVIS member universities**
- at least **3** and up to **6 ECTS** credits. Students will receive a **certificate**



Blended Intensive Programmes (BIPs)



CIVIS
Europe's Civic University Alliance

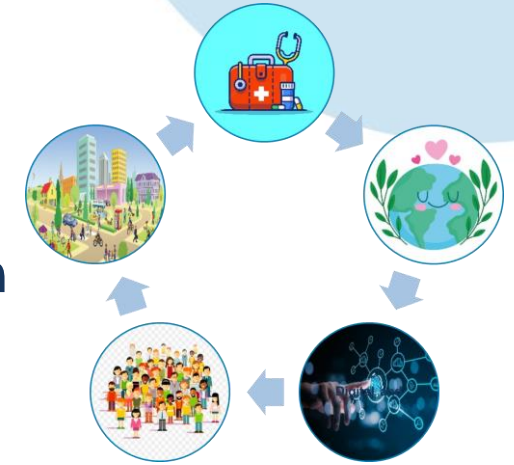
- developed to respond to one of the **5 CIVIS Challenges**:

BIP ERASMUS +



1. Climate, Environment, Energy
2. Society, Culture, Heritage
3. Health
4. Cities, territories and mobilities
5. Digital and Technological transformation

- interdisciplinary teaching and learning
- Students will receive a certificate of attendance and the BIP will be added to the student's **CIVIS Passport**
- Home universities can **recognize** ECTS as curricular or extra-curricular activities



Hubs

BIP ERASMUS +



Hub1 Climate, Environment, Energy

- - Prof. Livio De Santoli, referente accademico
- - Prof.ssa Donatella Magri, referente accademico
- - Prof. Marco Petitta, referente accademico

Hub2 Society, culture, heritage

- - Prof. Paolo Carafa, referente accademico
- - Prof.ssa Maria Cristina Marchetti, referente accademico

Hub3 Health (coordinato da Sapienza Università di Roma)

- - Prof. Luciano Saso, referente accademico e coordinatore
- - Prof Umberto Romeo, referente accademico

Hub4 Cities, territories and mobilities

- - Prof.ssa Alessandra Battisti, referente accademico
- - Prof. Stefano Ricci, referente accademico

Hub5 Digital and Technological transformation

- - Prof. Daniele Gorla, referente accademico
- - Prof. Francesco Bellini, referente accademico



Blended Intensive Programmes (BIPs)



BIP ERASMUS +



min 3 universities
from **3** countries of the
Programme



min 15 Participants
(students in mobility)



Btw 5-30 days
physical activities



Learning Agreement
Compulsory approval and signature



Min 3 ECTS =
Workload both in the physical
part and in the virtual one



Coordinating University



BIP ERASMUS +



- **Is part of the partnership**
- Receives and manages the funds for organizing the programme
- **Supervises and reports** the performed activities according to the rules of the Erasmus+ programme (*all components of the partnership are responsible for preparing, organizing, and performing the activities*)
- **Can host the physical part of the programme** (unless the parties agree differently)



Host Universities



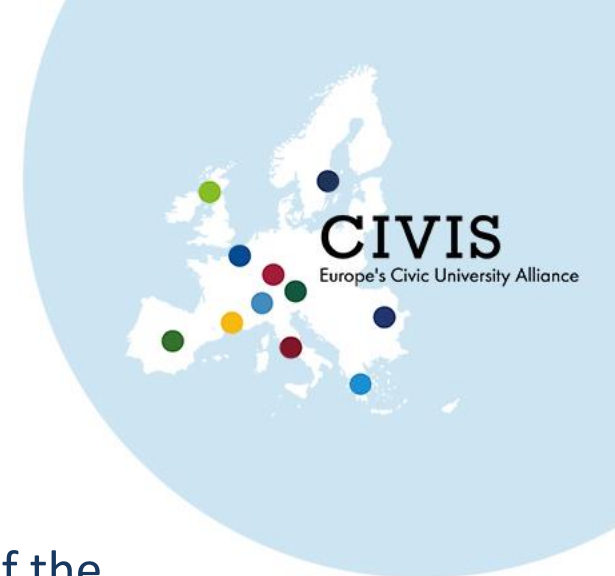
- BIP ERASMUS +



- Are part of the BIP partnership of 3 universities
- Host students and during the **physical part of the programme** in its premises or in another location within the country



Home Universities



- BIP ERASMUS +



- Universities that are part of the BIP partnership
- Universities that are not part of the partnership of the programme's countries and third associated and non associated countries
- **The coordinating university can send students** if the venue of the programme is not in its home country
- **Has its own mobility funds (Erasmus + KA131) for sending students and staff**



Participants: Students and PhD students



CIVIS BIPs



- Students from partner universities
- Undergraduate students, graduate students and PhD students that are enrolled in the hosting university
- Students from **all 3 cycles enrolled in partner universities, in the BIP partnership, and in the other CIVIS universities**
- Optional: students from other universities from countries that are part of the Erasmus + programme (with a mobility contribution funded by their home university)



Professors

CIVIS BIPs

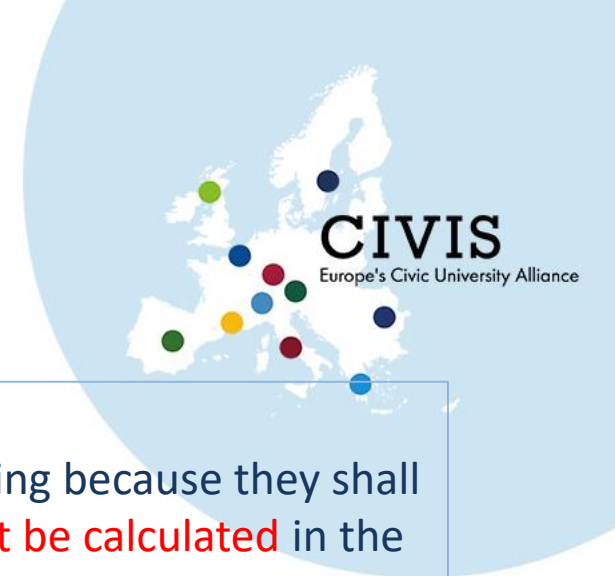


involved in the programme's teaching activities:

- Professors of the **host institution** (academics of the receiving university);
- Professors from other university partners or from other countries **part of the Erasmus programme and associated and non associated countries**;
- **Guests from external organisations** such as companies, associations, or research institutions



Participants: minimum 15



CIVIS BIPs



- **Students of the **host** university:** shall not receive Erasmus funding because they shall not be taking part in a physical mobility, therefore they **shall not be calculated** in the minimum number of **15 participants**
- **Additional participants from universities of associated countries (University of Glasgow, University of Lausanne, etc..) or funded by Erasmus + KA171 shall not be counted** in the minimum number of **15 participants**
- There is no maximum number of participants for students, the organisers can independently evaluate a limit that guarantees the best management of the activity.



Funding: organisational costs

CIVIS BIPs



ELEGIBLE COSTS	AMOUNT
Costs related to the organisation of the BIP	400 EUR per participant, for a minimum number of 15 up to a maximum number of 20 participants
Amount calculated according to the number of students participating, excluding teachers	
Funding allocated to the coordinating university	BIP Sapienza for the 3 call: from 6.000 to 8.000 euro max
Contributions to mobility financed by the home universities of students and teachers	
Participants in Erasmus+ programs do not pay registration fees	

Funding: student mobility

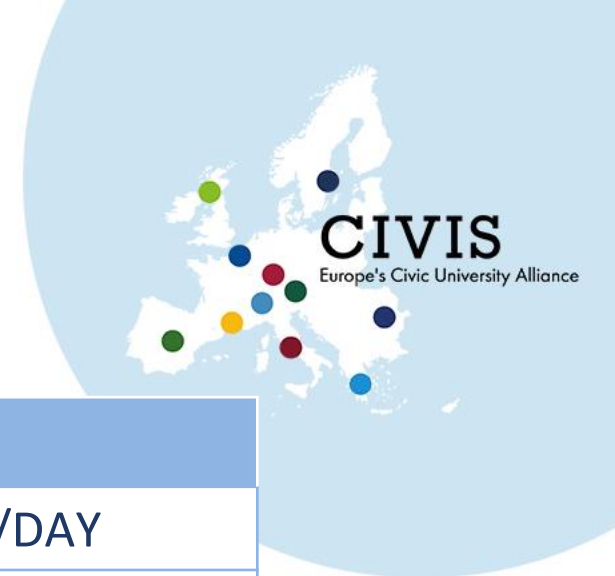
CIVIS BIPs



DURATION	SUM
Up to day 14 of the activity	70 EUR /DAY
Between days 15 and 30 of the activity	50 EUR/DAY

- They can be covered by the individual contribution also for **one day of travel before and one day after the activity**.
- Students with **fewer opportunities** receive an **additional sum of 100 EUR** to the individual contribution for a physical activity lasting **5 days**.

****Student and teaching mobility always supported by the university of origin: Erasmus + funds for mobility.***



Funding: mobility of academics



CIVIS BIPs



- **The individual contribution for professors** depends on the host country (Erasmus + Teaching mobility)
- They can be covered by the individual contribution also for **one day of travel before and one day after the activity.**
- **Min 8 hours of teaching activity (E+ teaching mobility)**

**always supported by the university of origin: Erasmus + funds for mobility.*



Funding: travel of students with fewer opportunities



CIVIS BIPs



Travel distances ⁴⁵	In case of standard travel	In case of green travel
Between 10 and 99 KM:	23 EUR per participant	
Between 100 and 499 KM:	180 EUR per participant	210 EUR per participant
Between 500 and 1999 KM:	275 EUR per participant	320 EUR per participant
Between 2000 and 2999 KM:	360 EUR per participant	410 EUR per participant
Between 3000 and 3999 KM:	530 EUR per participant	610 EUR per participant
Between 4000 and 7999 KM:	820 EUR per participant	
8000 KM or more:	1500 EUR per participant	



Resources

CIVIS BIPs



- Web page: <https://blendedmobility.com/en>
- Toolkit: <https://blendedmobility.com/en/toolkit>
- Guide for preparing a Blended Mobility course: https://www.dropbox.com/s/rt6vu3r1ssi5f6y/BM_CourseGuide_EN.pdf



BIPs Catalogue and next call

<https://civis.eu/en/civis-courses>

NEXT CALL: 1 April 2023

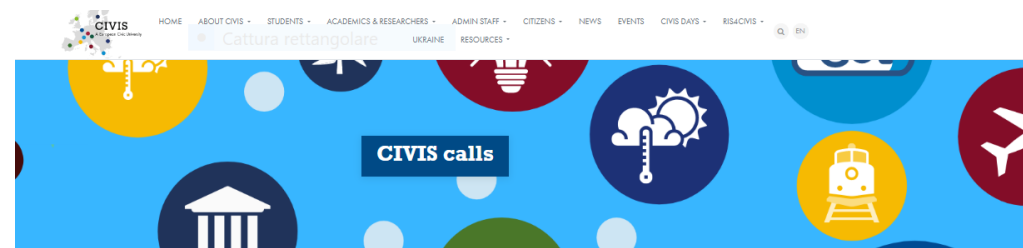
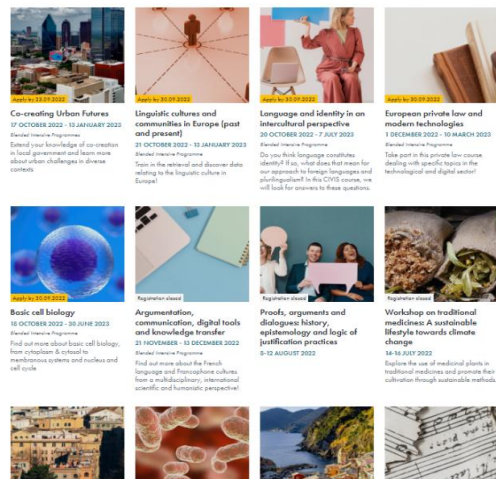
with deadline 15 May 2023

<https://civis.eu/en/activities/civis-calls>



CIVIS FOCUS AREA: FIELD OF STUDY: LEVEL: FORMAT: LANGUAGE: RESULTS: NEXT: APPLY NOW

40 courses with format Blended



Blended Intensive Programmes - Call for proposals

This call for proposals will be open from 1 April to 15 May 2023.

CIVIS is launching a call for Blended Intensive Programs to be designed, submitted and implemented by the ten partner universities (any academic staff member of a CIVIS member university).

Eligibility criteria include the following:

- Proposals should involve at least 3 CIVIS member universities
- The programme should be in a blended format (virtual sessions & 5 days of physical mobility)
- Participation in the BIP should correspond to a set number of at least 3 and up to 6 ECTS (to be defined by the organizers)
- Proposals should be related to one of the 5 Hubs of the CIVIS Alliance
 - Health
 - Cities, Territories and Mobility
 - Climate, Environment, Energy
 - Digital and Technological Transformation
 - Societies, Culture and Heritage

Find more information and apply on the dedicated webpage.



BIPs SUR



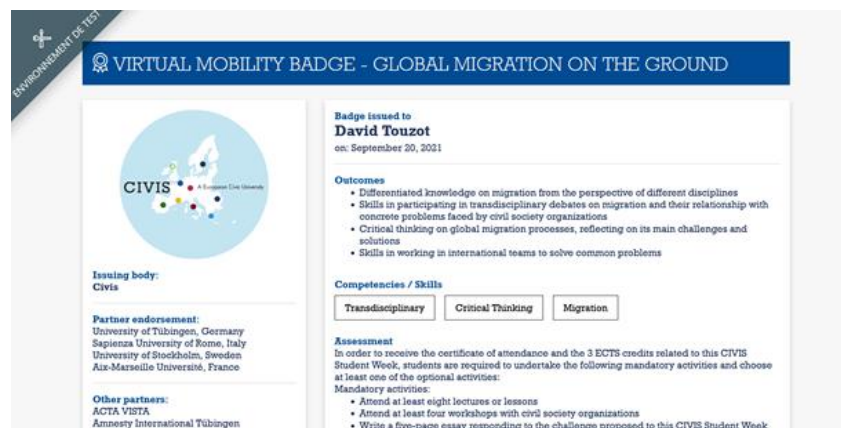
1. EUROTALES - Linguistic Cultures and Communities in Europe. A language Museum as a research hub implemented with the community
2. Innovative approaches for effective detection and removal of pollutants in sustainable water management
3. European Private Law and modern technologies
4. Roman Mobilities
5. Rights and democracy: the multilevel protection of fundamental rights and the role of constitutional and European Courts
6. Sustainability, reforms and environmental challenges: The future of EU
7. The Ethics of Narratives: between old and new media
8. European Renaissance I: Reading for Entertainment
9. Linguistic cultures and communities in Europe past and present: building the EUROTALES Museum
10. Culture and Politics. New forms of engagement in the Mediterranean area (2000-2022)



CIVIS PASSPORT



CIVIS passport

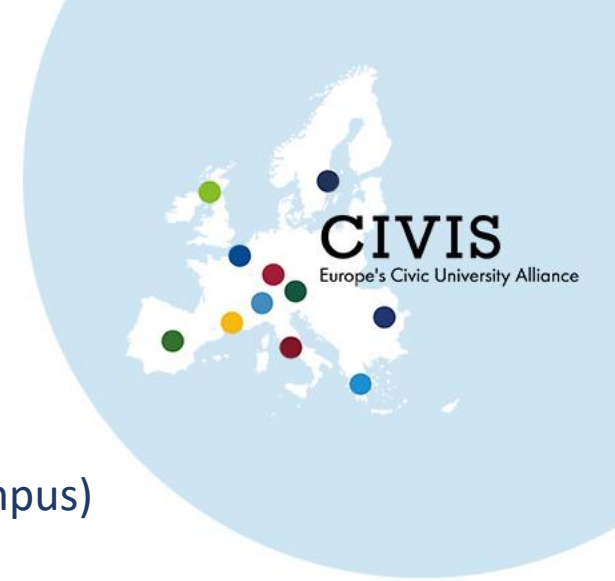


- Digital Badges:

<https://civis.eu/en/the-civis-passport>



SERVICES FOR BIP'S STUDENTS



- Incoming Students Guide (tips for travelling and living in Rome and in main Campus)
- Canteen Accreditation (LazioDisco, full meal for 2,80 €)



SAPIENZA



1. Summer/winter school

- regolamento «master, corsi di alta formazione, corsi di formazione, corsi intensivi»

<https://www.uniroma1.it/it/documento/regolamento-materia-di-corsi-di-master-corsi-di-alta-formazione-corsi-di-formazione-corsi>

➤ procedura descritta per i corsi intensivi:

- Approvazione da parte del **consiglio di dipartimento**
- Invio al settore **Master del progetto formativo**, anche in lingua inglese (non occorre la traduzione IT)
- DR di istituzione
- Il corso verrà quindi inserito **nell'offerta formativa di Sapienza** e potrà **erogare crediti agli studenti che lo frequenteranno con successo.**

2 BIP come corso curriculare

- Seguire le normali **procedure per l'inserimento degli insegnamenti nella didattica programmata** e fare attenzione alle scadenze
- Inquadrato in un SSD
- «Esame» in presenza

