



SAPIENZA
UNIVERSITÀ DI ROMA

I PRINCIPALI PROGRAMMI EUROPEI DI FINANZIAMENTO R&I:

MARIE SKLODOWSKA-CURIE POSTDOCTORAL FELLOWSHIPS

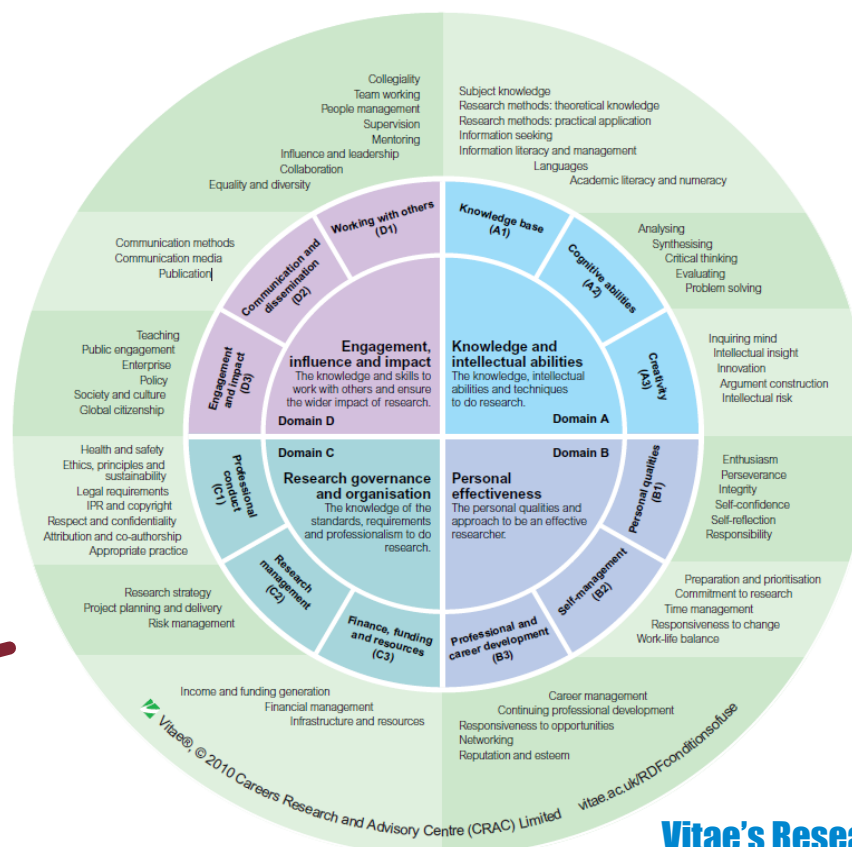
**FORMAZIONE SOFT SKILLS
DOTTORANDI 2021**

10 novembre 2021

RESEARCHERS DEVELOPMENT

KEY SKILLS

- Project planning and delivery
- Funding generation
- Financial management



**VitaE's Researcher
Development Framework**

RESEARCHERS DEVELOPMENT

PROJECT PLANNING AND DELIVERY



RESEARCHERS DEVELOPMENT

FUNDING GENERATION

1 Understands the processes for funding and evaluation of research. Writes own research proposal.

2 Has broad awareness and knowledge of key relevant funding sources and grant application procedures. Applies for small grants/fellowships successfully.

3/4 Aware of wider economic context. Understands funding complexities and variety of sources for funding. Applies for increasingly larger grants, seeking alternative sources. Engages in income generation for own institution.

MSCA POSTDOCTORAL FELLOWSHIPS

Supporting excellence in research and innovation

The Marie Skłodowska-Curie Actions are the European Union's reference programme for doctoral education and postdoctoral training. They contribute to excellent research, boosting jobs, growth and investment by equipping researchers with new knowledge and skills. They foster research cooperation across borders, sectors and disciplines.

Discover the MSCA

[Home](#) | [Marie Skłodowska-Curie Actions \(europa.eu\)](#)

MSCA POSTDOCTORAL FELLOWSHIPS

THE MSCA-PF PROGRAMME

grant
**POSTDOCTORAL
FELLOWSHIPS**



to
**EXCELLENT
RESEARCHERS**



undertaking
**INTERNATIONAL
MOBILITY**



MSCA POSTDOCTORAL FELLOWSHIPS

TYPES OF FELLOWSHIPS

Open to
researchers of
any nationality



**EUROPEAN
FELLOWSHIPS**



towards / within
EUROPE/AC*



**GLOBAL
FELLOWSHIPS**



towards a
THIRD COUNTRY
with a mandatory return phase in
EU/AC



Open to EU/AC
nationals or long
term residents



* ASSOCIATED COUNTRIES:

Albania, Armenia, Bosnia and Herzegovina, Faroe Islands, North Macedonia, Georgia, Iceland, Israel, Moldova, Montenegro, Norway, Serbia, Switzerland, Tunisia, Turkey, Ukraine and the UK

MSCA POSTDOCTORAL FELLOWSHIPS

CALL REQUIREMENTS

RESEARCHERS



PhD at the call deadline

max. 8 years of full time research experience

not resided/carried out main activity in the country of the HI for more than **12 months** in the last **3 years**



Mobility Rule

HOST INSTITUTION



academic / non-academic sector

legal entity in a EU member state or Associated country (beneficiary)



For GF 2 HIs:

EU/AC beneficiary + TC partner organisation

MSCA POSTDOCTORAL FELLOWSHIPS

EXPECTED RESULTS

RESEARCHERS



increased set of **research & transferable skills** for
better **employability & career prospects**

new mind-sets & approaches to research

enhanced **networking & communication capacities**
with **scientific peers & general public**

HOST INSTITUTION

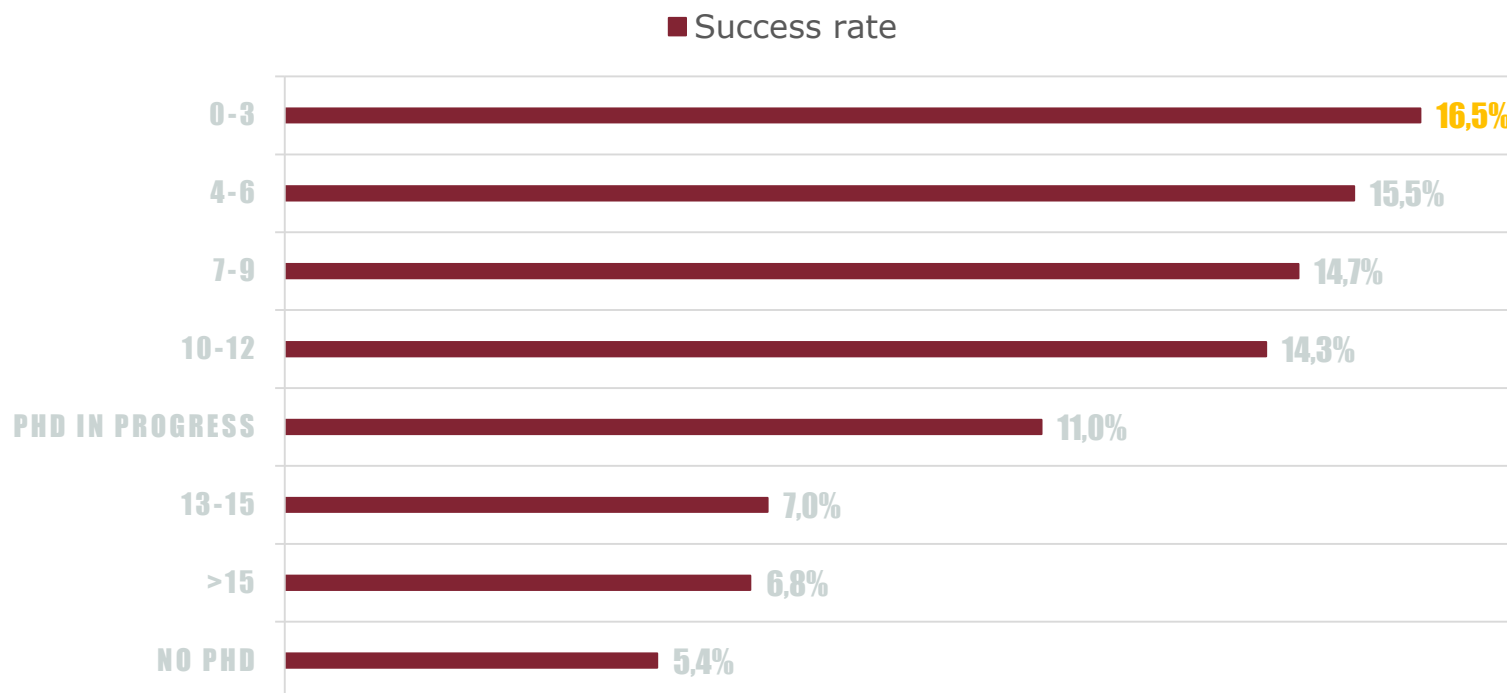


Increased **global attractiveness, visibility & reputation**

Stronger R&I capacity & outputs

MSCA POSTDOCTORAL FELLOWSHIPS

SUCCESS RATE/YEARS FROM PHD



Source: Net4Mobility Webinar - https://youtu.be/Q_-0mINkbgI

CAREER DEVELOPMENT

THE «SAPIEXCELLENCE» PROGRAMME

36
FELLOWSHIPS
AWARDED IN 3
YEARS

ADD

To extend by 1 year the contract
of MSCA fellows beyond the
project lifetime
Annual budget: €100.000



SEAL

To fund the research of MSCA
applicants who were granted the
Seal of Excellence
Annual budget: €200.000



BE-FOR-ERC

To finance young researchers &
support the preparation of their
ERC Starting Grant application
Annual Budget: €600.000



CAREER DEVELOPMENT



7

**MSCA FELLOWS
GAINED THE
«ADD SAPIEXCELLENCE»
FELLOWSHIP**

9

**MSCA APPLICANTS
GAINED THE
«SEAL OF SAPIEXCELLENCE»
FELLOWSHIP**

CAREER DEVELOPMENT

4

**MSCA FELLOWS WITH
TENURE TRACK POSITION
(RTD-B)**



**SPECIAL RECRUITMENT
PROCEDURE FOR GRANTEES OF
MSCA GLOBAL FELLOWSHIP**

Ministerial Decree n.963/2015



**DIRECT
RECRUITMENT**
(no open competition)
+
COFUNDED 50%

PREPARING FOR A MSCA-PF

RESEARCH & METHODOLOGY



The research must be **AMBITIOUS & INNOVATIVE**.

It must fill an existing gap and contribute to the **ADVANCEMENT** of the state-of-the-art.

Your approach must be **ORIGINAL**. The combination of various technics (inter-multidisciplinarity) is positively evaluated.

PREPARING FOR A MSCA-PF

QUALITY OF SUPERVISION



The supervisor must be **COHERENT** with the scientific objectives of the project and the type of competences that you need to acquire.

You must prove that s/he is **THE MOST APPROPRIATE** supervisor for your project and your personal development and how her/his expertise fit the purposes of the project.

PREPARING FOR A MSCA-PF

RESEARCHER'S EXPERIENCE



You should provide a solid explanation on why **YOU** should be granted a MSCA Postdoctoral Fellowship

You must demonstrate that you have the **RIGHT COMPETENCES** to implement successfully the proposed research and that you can **TAKE UP** the new skills and knowledge acquired during the fellowship to become more independent in your field

PREPARING FOR A MSCA-PF

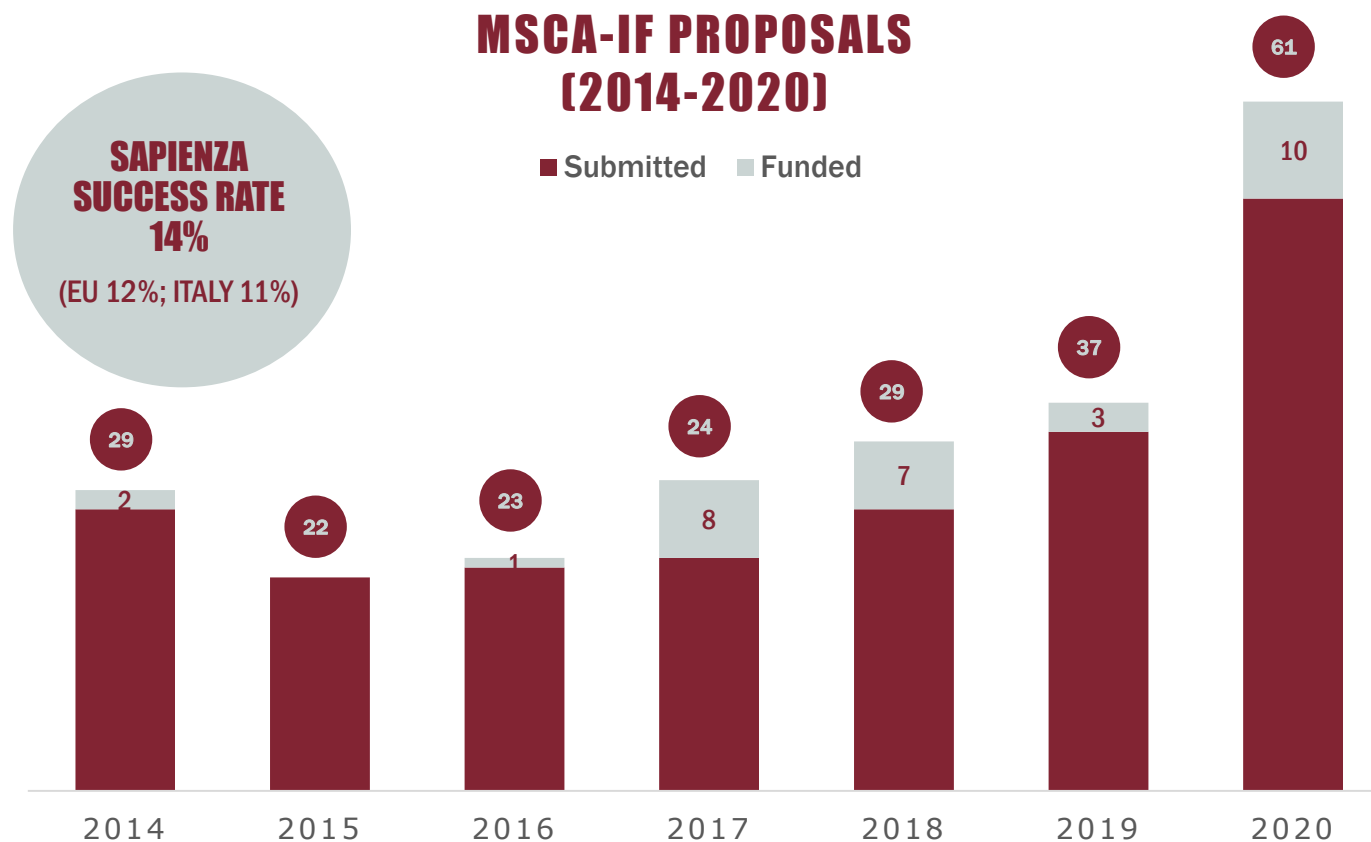
CV



You must describe your major **RESEARCH ACHIEVEMENTS & TRACK RECORD**, e.g. publications, conference participations, granted patents, monographs, chapters, examples of leadership in industrial innovation. Include bibliographic information e.g. number of citations, impact factor, journal ranking. If not first author, briefly explain your contribution. Include all **RELEVANT EXPERIENCE** (e.g. teaching, reviewing, consultancy, supervision, event organisation, public outreach etc.)

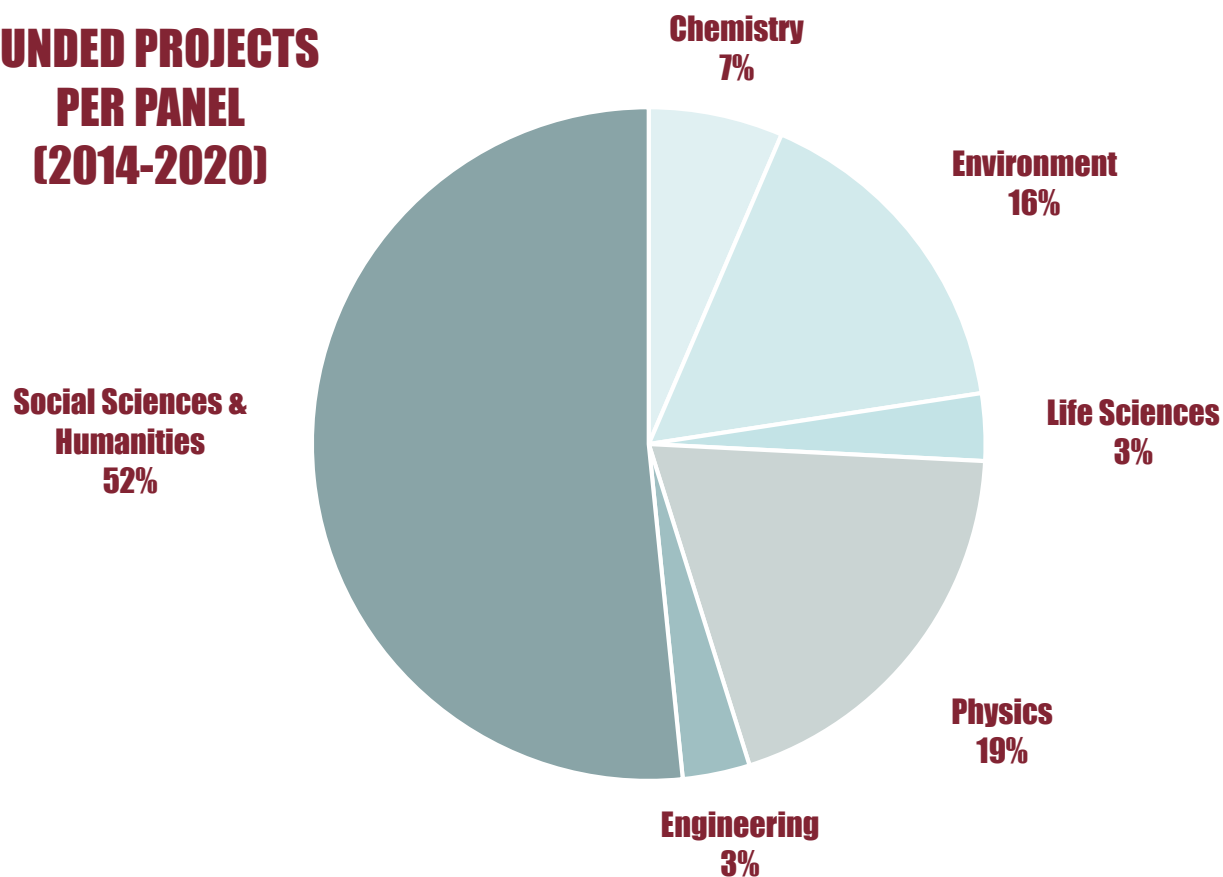
SAPIENZA PERFORMANCE

MSCA-IF PROPOSALS (2014-2020)



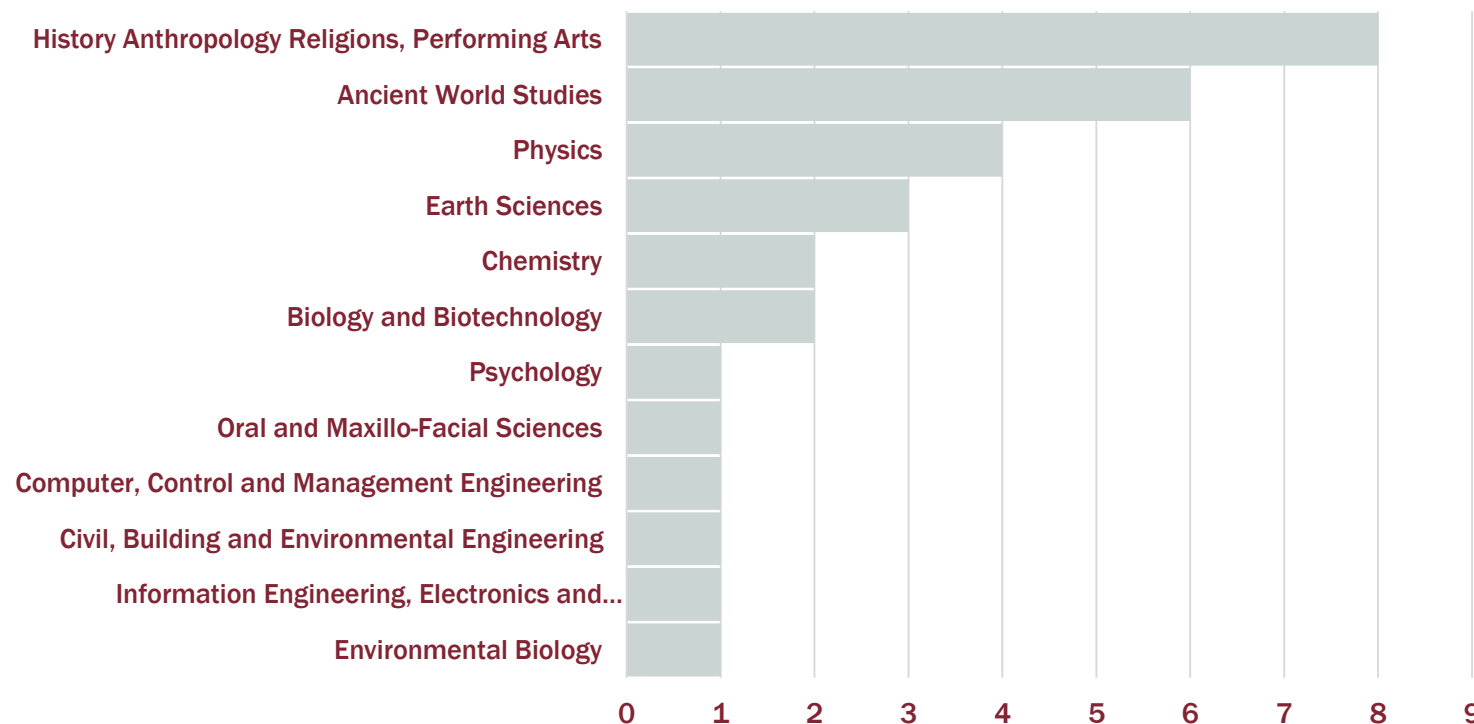
SAPIENZA PERFORMANCE

FUNDED PROJECTS PER PANEL (2014-2020)



SAPIENZA PERFORMANCE

FUNDED PROJECTS PER DEPARTMENT (2014-2020)



SAPIENZA SUPPORT SERVICES

TECHNICAL SUPPORT FOR APPLICANTS

MSCA LAB

Analysis of the application form
& grant writing techniques



TOOLKIT

Instruments to support Sapienza
applicants during proposal
writing



PRE-SCREENING

Feedback on the overall
coherence of the proposal with
programme requirements



SAPIENZA SUPPORT SERVICES

ADMINISTRATIVE SUPPORT FOR GRANTEES

COMMUNICATION WITH REA

Acting as interface with REA
officers on administrative issues



GRANT AGREEMENT / PARTNERSHIP AGREEMENT

Assisting the negotiation phase with REA
up to the signature of the GA & the
negotiation of hosting arrangements with
partners



PROJECT MANAGEMENT

Assisting host departments in
handling recruitment and financial
aspects in line with the GA



TAKE-HOME MESSAGE



**Think of an
innovative idea that you
would like to develop**



**Look for
sinergies with
other disciplines**



**Train your
grant writing
skills applying to
smaller grants**



**Foster your
network and
collaborations**



**Improve your
CV with relevant
publications and
experiences**



THANK YOU FOR YOUR ATTENTION

CONTACTS:

Rosa Di Stefano

Sapienza University of Rome
International Office –
Researchers Mobility & European Programmes Unit

rosa.distefano@uniroma1.it
ricercainternazionale@uniroma1.it