



**SAPIENZA**  
UNIVERSITÀ DI ROMA

**I PRINCIPALI PROGRAMMI EUROPEI  
DI FINANZIAMENTO R&I:**

**MARIE SKLODOWSKA-CURIE  
POSTDOCTORAL FELLOWSHIPS**

**FORMAZIONE SOFT SKILLS  
DOTTORANDI 2022**

**14 novembre 2022**

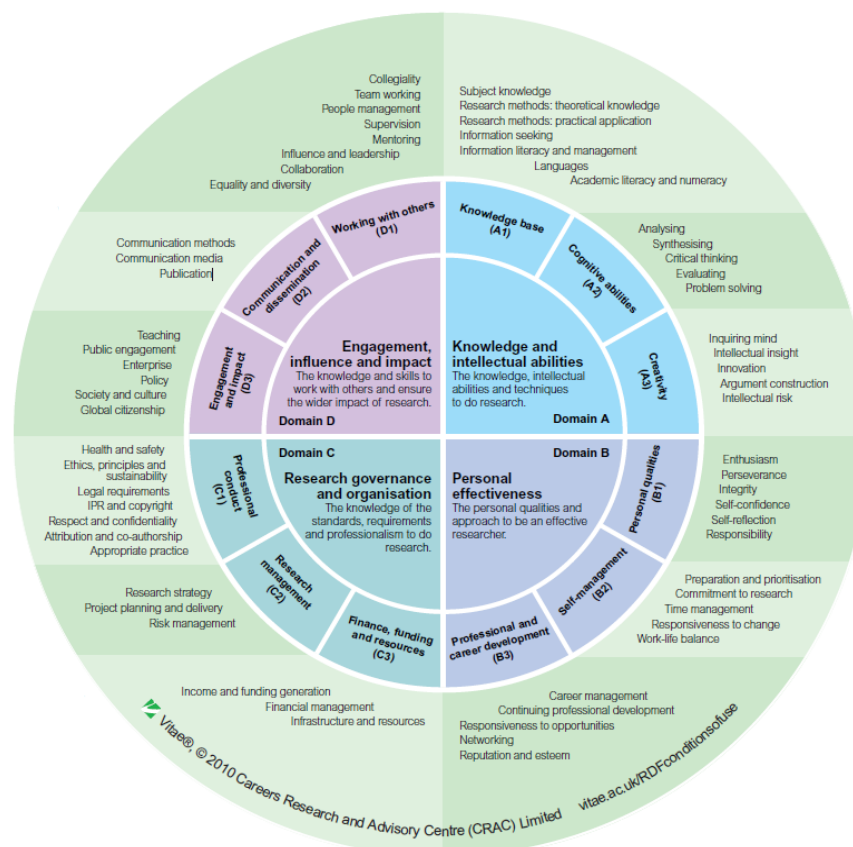
# RESEARCHERS DEVELOPMENT

## RESEARCHER DEVELOPMENT FRAMEWORK

“The RDF is a professional development framework for planning, promoting and supporting the personal, professional and career development of researchers. It articulates the knowledge, behaviours and attributes of successful researchers”



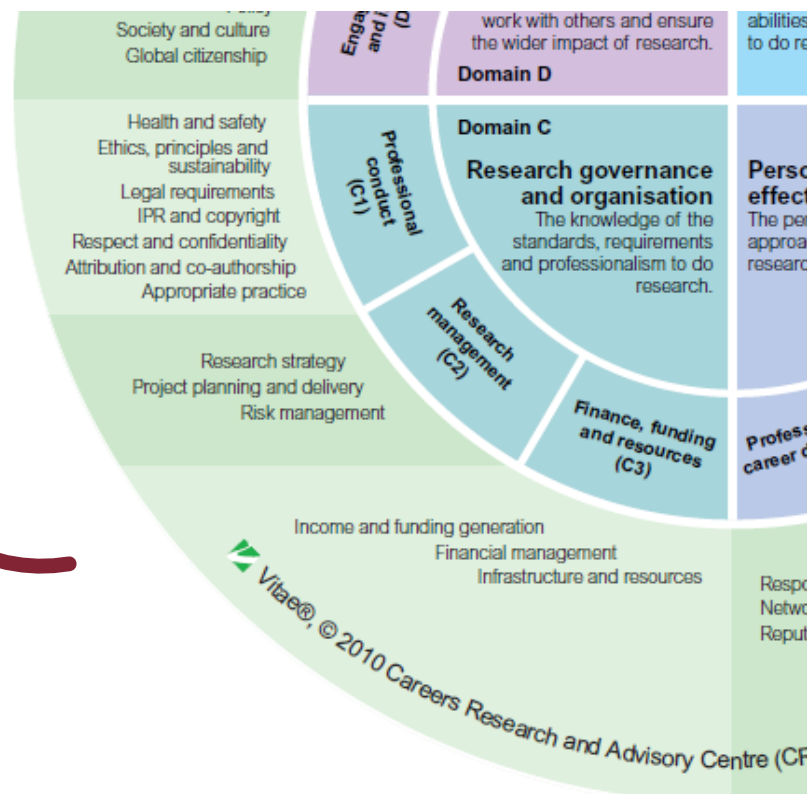
### Vitae's Researcher Development Framework



## RESEARCHERS DEVELOPMENT

### KEY SKILLS

- Project planning and delivery
- Funding generation
- Financial management



## RESEARCHERS DEVELOPMENT

### PROJECT PLANNING AND DELIVERY



## RESEARCHERS DEVELOPMENT

### FUNDING GENERATION



# MSCA POSTDOCTORAL FELLOWSHIPS

## Supporting excellence in research and innovation

The Marie Skłodowska-Curie Actions are the European Union's reference programme for doctoral education and postdoctoral training. They contribute to excellent research, boosting jobs, growth and investment by equipping researchers with new knowledge and skills. They foster research cooperation across borders, sectors and disciplines.

Discover the MSCA

[Home](#) | [Marie Skłodowska-Curie Actions \(europa.eu\)](#)

# MSCA POSTDOCTORAL FELLOWSHIPS

## THE MSCA-PF PROGRAMME

---

grant  
**POSTDOCTORAL  
FELLOWSHIPS**



to  
**EXCELLENT  
RESEARCHERS**



undertaking  
**INTERNATIONAL  
MOBILITY**



## MSCA POSTDOCTORAL FELLOWSHIPS

### TYPES OF FELLOWSHIPS

Open to  
researchers of  
any nationality



**EUROPEAN  
FELLOWSHIPS**



towards / within  
**EUROPE/AC\***



**GLOBAL  
FELLOWSHIPS**



towards a  
**THIRD COUNTRY**  
with a mandatory return phase in  
EU/AC



Open to EU/AC  
nationals or long  
term residents



**\* ASSOCIATED COUNTRIES:**

*Albania, Armenia, Bosnia and Herzegovina, Faroe Islands, North Macedonia, Georgia, Iceland, Israel, Moldova, Montenegro, Norway, Serbia, Tunisia, Turkey, Ukraine and the UK\**



## MSCA POSTDOCTORAL FELLOWSHIPS

### CALL REQUIREMENTS

#### RESEARCHERS



**PhD** at the call deadline

max. **8 years** of full time research experience

**not resided/carried out main activity** in the country of the HI for more than **12 months** in the last **3 years**



**Mobility Rule**

#### HOST INSTITUTION



**academic / non-academic sector**

legal entity in a EU member state or Associated country (**beneficiary**)



**For GF 2 HIs:**

**EU/AC beneficiary + TC partner organisation**

## MSCA-PF – SOME CONTEXT



“...we will need highly skilled research-based human capital that is resilient, able to detect and tackle future challenges, to communicate scientific evidence to policy-makers and the public at large and to work across disciplines. This will continue guiding Marie Skłodowska-Curie Actions (MSCA) that fund, support and train the talents and institutions behind research and innovation...”

## MSCA-PF – SOME CONTEXT

### THE STRATEGIC PLAN

“...we will need **highly skilled** research-based human capital that is resilient, **able to detect and tackle future challenges**, to **communicate scientific evidence to policy-makers and the public at large** and to work across disciplines. This will continue guiding Marie Skłodowska-Curie Actions (MSCA) that fund, support and train the talents and institutions behind research and innovation...”



### MSCA EXPECTED RESULTS

**increased set of research & transferable skills** for better employability & career prospects

Mobility & Training

**new mind-sets & approaches** to research

Innovation

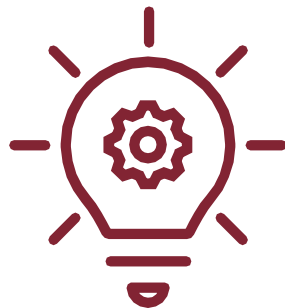
**enhanced networking & communication capacities** with scientific peers & general public

Communication & Dissemination



**IN YOUR PROPOSAL YOU MUST DEMONSTRATE THAT YOU WILL  
ACHIEVE THESE RESULTS THROUGH THE FELLOWSHIP**

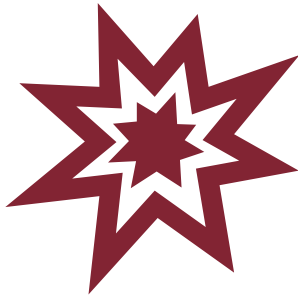
## MSCA-PF MAIN FEATURES: EXCELLENCE



The Excellence section represents the **core** part of your project. Here you will describe the **research project and approach**, why they are **innovative**, and how you intend to boost your career through the **acquisition of new skills**.

It is also the section in which you present the **rationale** behind your proposal, including your choice of supervisor, and where you explain why you make a **good candidate** for this fellowship

## MSCA-PF MAIN FEATURES: IMPACT



The Impact section is the part in which you demonstrate how **IMPACTFUL** your project is in the short, medium and long term.

The impact will be assessed on **TWO** levels:

- ▶ Your skills & career development
- ▶ Science, society and the economy

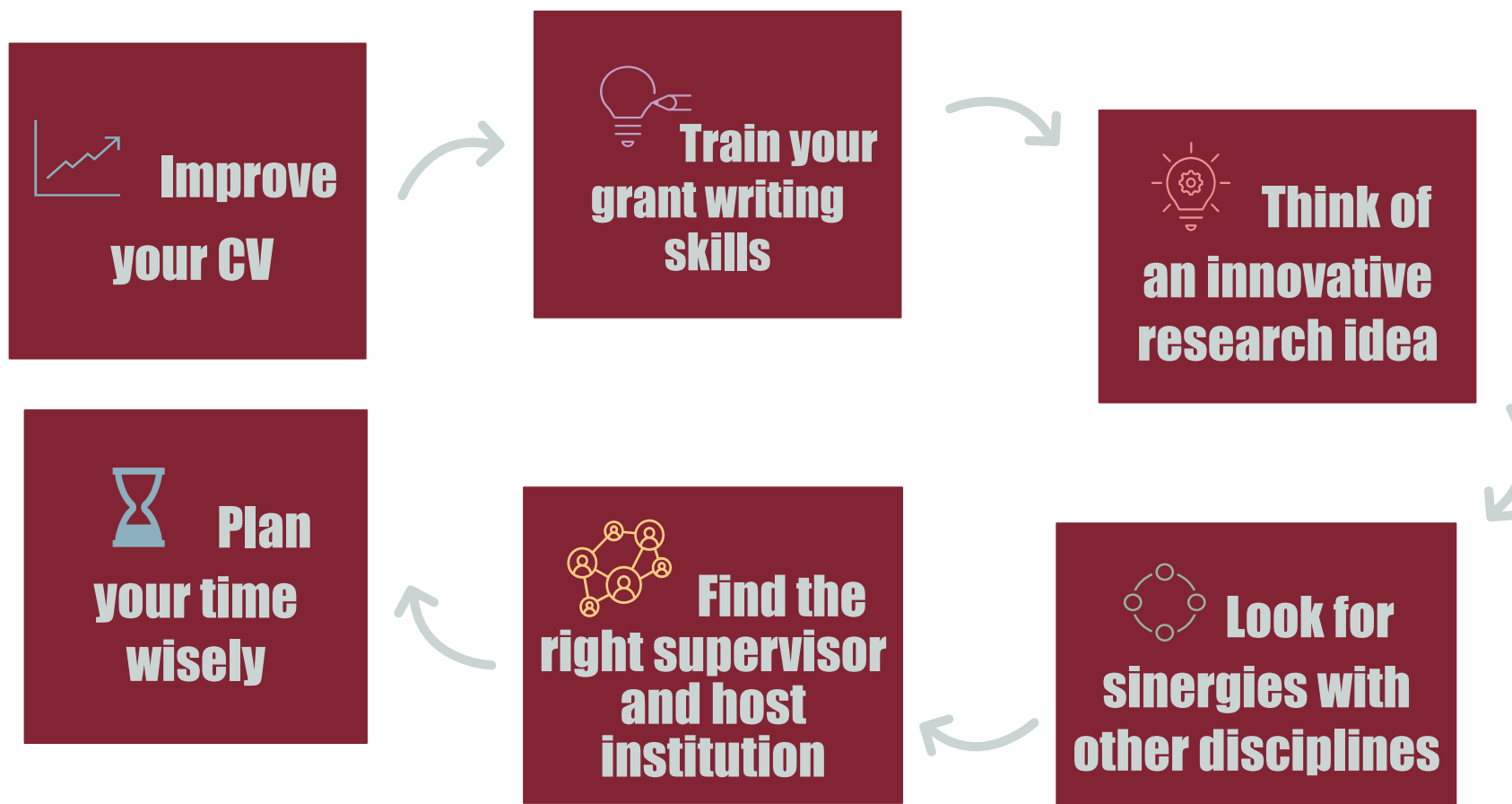
Importance will also be given to the measures you will implement to **MAXIMIZE** the project's impacts (dissemination, communication and exploitation activities)

## MSCA-PF MAIN FEATURES: IMPLEMENTATION



The purpose of the Implementation section is to demonstrate the **FEASIBILITY** of the action and reassure evaluators about the successful completion of the project.

## GETTING READY FOR A MSCA-PF



## GETTING READY FOR A MSCA-PF



**Improve  
your CV**



You should convince evaluators that **YOU** should be granted a MSCA Postdoctoral Fellowship and that you have the **RIGHT COMPETENCES** to implement successfully the proposed research.

- articles in international journals
- international conferences
- short stays abroad
- small research projects



## GETTING READY FOR A MSCA-PF



**Train your  
grant writing  
skills**



Sapienza organizes a **GRANT WRITING LAB** for researchers who will submit a proposal with Sapienza as host institution.

It consists of a 3-day training in which you will learn how to address efficiently every section of the proposal template.

## GETTING READY FOR A MSCA-PF



**Think of an  
innovative  
research idea**



**Look for  
sinergies with  
other disciplines**



The research must be **AMBITIOUS & INNOVATIVE**.

It must be relevant for the research field & must answer a research need: it must aim to fill an existing gap and contribute to the **ADVANCEMENT** of the state-of-the-art.

Your approach must be **ORIGINAL**. The combination of various technics (inter-multidisciplinarity) is positively evaluated.

## GETTING READY FOR A MSCA-PF



Find the  
right supervisor  
and host  
institution



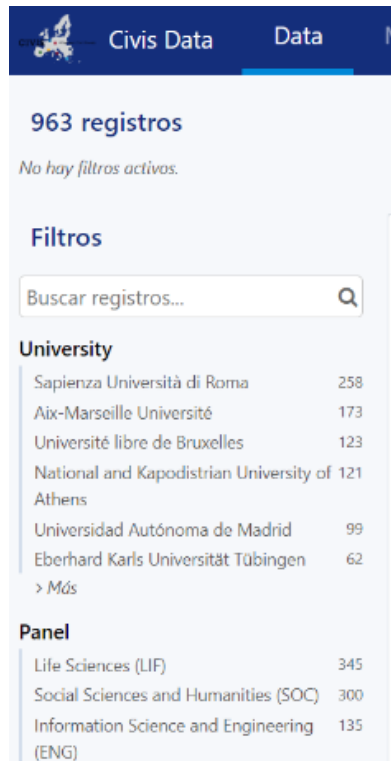
The supervisor must be **COHERENT** with the scientific objectives of the project and the type of competences that you need to acquire.

You must prove that s/he is **THE MOST APPROPRIATE** supervisor for your project and your personal development



**PROPOSALS MUST BE SUBMITTED JOINTLY BY THE RESEARCHER AND A SUPERVISOR, THEREFORE FINDING A SUPERVISOR IS MANDATORY**

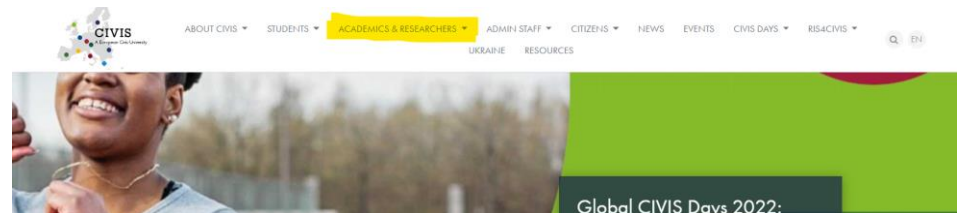
## GETTING READY FOR A MSCA-PF



The **CIVIS Alliance** has developed a **database of potential supervisors**. Currently there are over **250 Sapienza professors** who expressed their willingness to host MSCA-PF fellows.

The database can be searched by panel and by main areas of expertise to facilitate the matching.

The database for the call 2022 will be released soon. Please check the CIVIS website under the “academics and researchers” tab for updates.



## GETTING READY FOR A MSCA-PF



**Plan your  
time wisely**



Call published: **April 2023**

Deadline: **September 2023**

Pre-screening: **August 2023**

Time to write a (good) proposal:  
approximately **2 months**

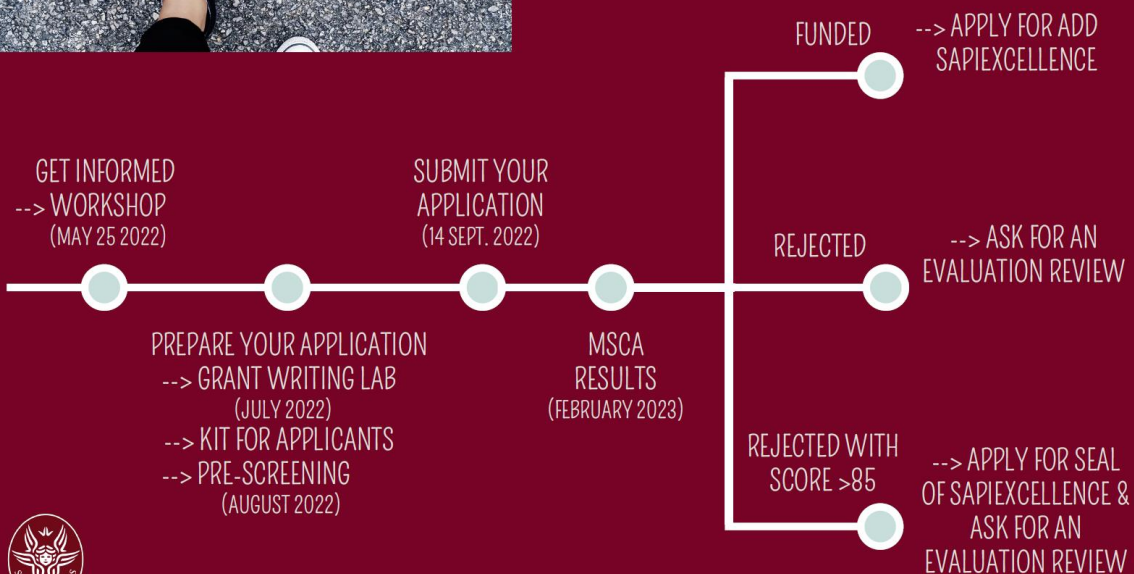
Plan some **time for revision** (you need to read your proposal multiple times before submission; also ask peers to read it)

Take into account that July/August is holiday period and institutions may be closed (eg. in case you need a Letter of Commitment for a Global Fellowship)

## PATH TOWARDS A MSCA-PF @ SAPIENZA



### YOUR PATH TOWARDS A MSCA @ SAPIENZA



## CAREER DEVELOPMENT

### THE «SAPIEXCELLENCE» PROGRAMME

**62**  
FELLOWSHIPS  
AWARDED IN 4  
YEARS

#### ADD

To extend by 1 year the contract  
of MSCA fellows beyond the  
project lifetime  
Annual budget: €100.000



#### SEAL

To fund the research of MSCA  
applicants who were granted the  
Seal of Excellence  
Annual budget: €200.000



#### BE-FOR-ERC

To finance young researchers &  
support the preparation of their  
ERC Starting Grant application  
Annual Budget: €600.000



## CAREER DEVELOPMENT



9

**MSCA FELLOWS  
GAINED THE  
«ADD SAPIEXCELLENCE»  
FELLOWSHIP**

12

**MSCA APPLICANTS  
GAINED THE  
«SEAL OF SAPIEXCELLENCE»  
FELLOWSHIP**



## CAREER DEVELOPMENT

8

**MSCA FELLOWS WITH  
TENURE TRACK POSITION  
(RTD-B)**



**SPECIAL RECRUITMENT  
PROCEDURE FOR GRANTEES OF  
MSCA GLOBAL FELLOWSHIP**

Ministerial Decree n.919/2022



**DIRECT  
RECRUITMENT**  
(no open competition)  
+  
**COFUNDED 50%**

## SAPIENZA SUPPORT SERVICES

### TECHNICAL SUPPORT FOR APPLICANTS

#### MSCA LAB

Analysis of the application form  
& grant writing techniques



#### TOOLKIT

Instruments to support Sapienza  
applicants during proposal  
writing



#### PRE-SCREENING

Feedback on the overall  
coherence of the proposal with  
programme requirements



## SAPIENZA SUPPORT SERVICES

### ADMINISTRATIVE SUPPORT FOR GRANTEES

#### COMMUNICATION WITH REA

Acting as interface with REA  
officers on administrative issues



#### GRANT AGREEMENT / PARTNERSHIP AGREEMENT

Assisting the negotiation phase with REA  
up to the signature of the GA & the  
negotiation of hosting arrangements with  
partners

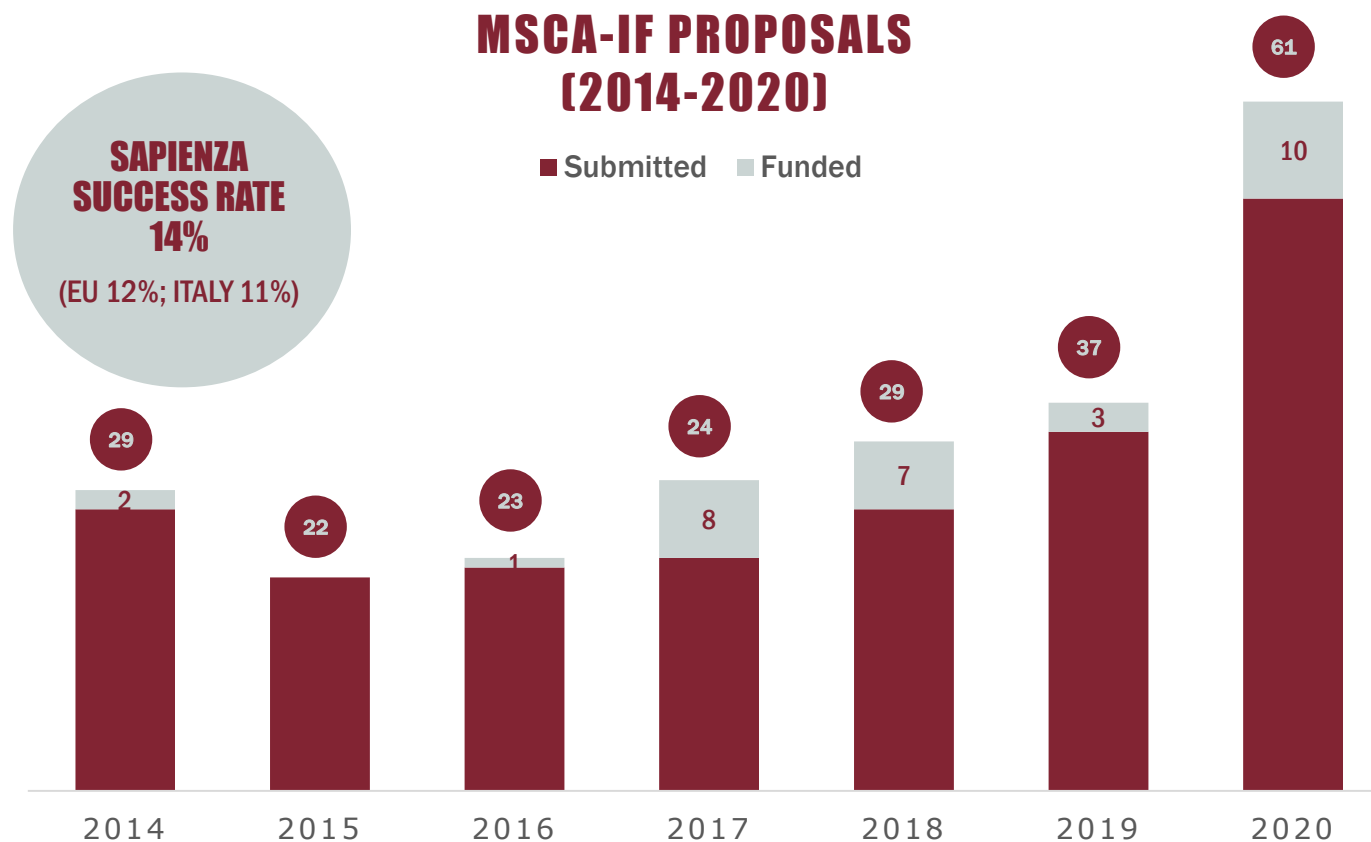


#### PROJECT MANAGEMENT

Assisting host departments in  
handling recruitment and financial  
aspects in line with the GA

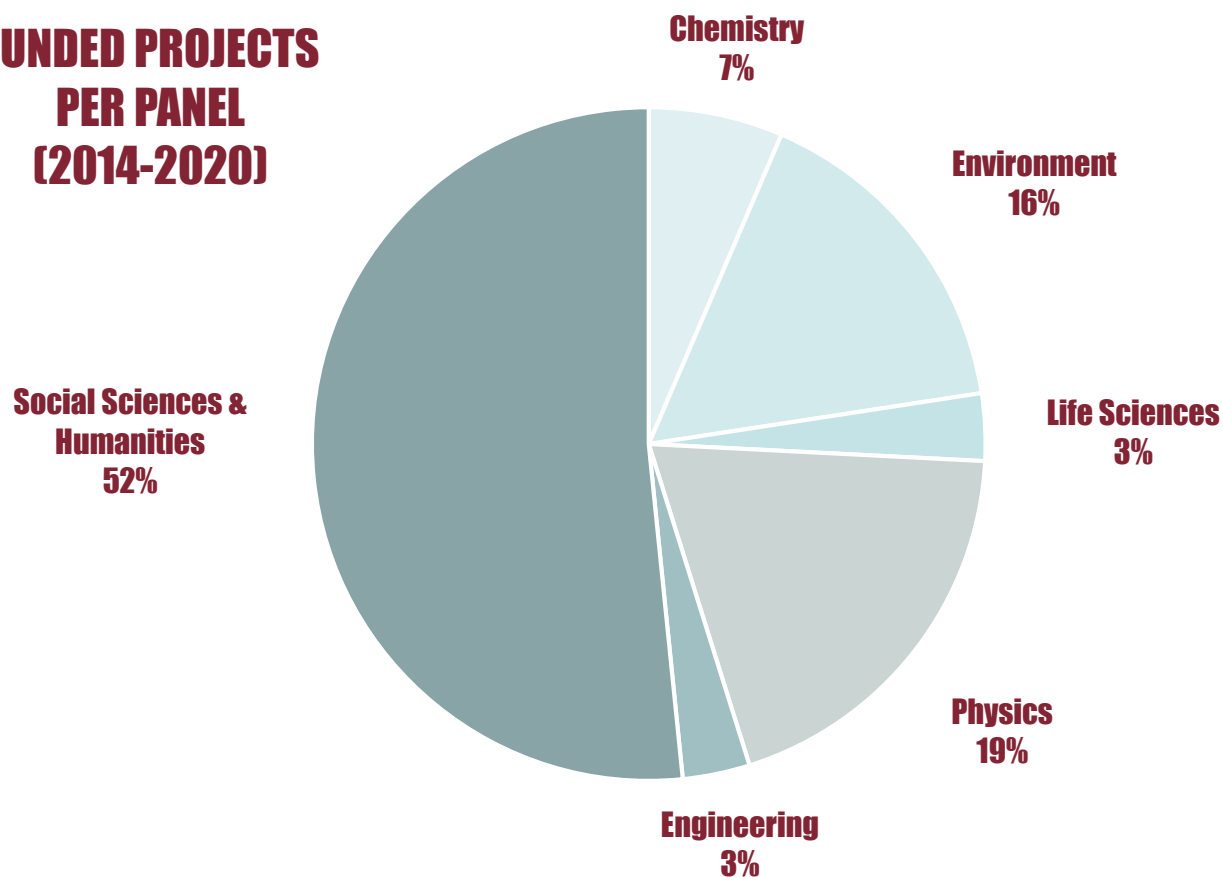


## SAPIENZA PERFORMANCE



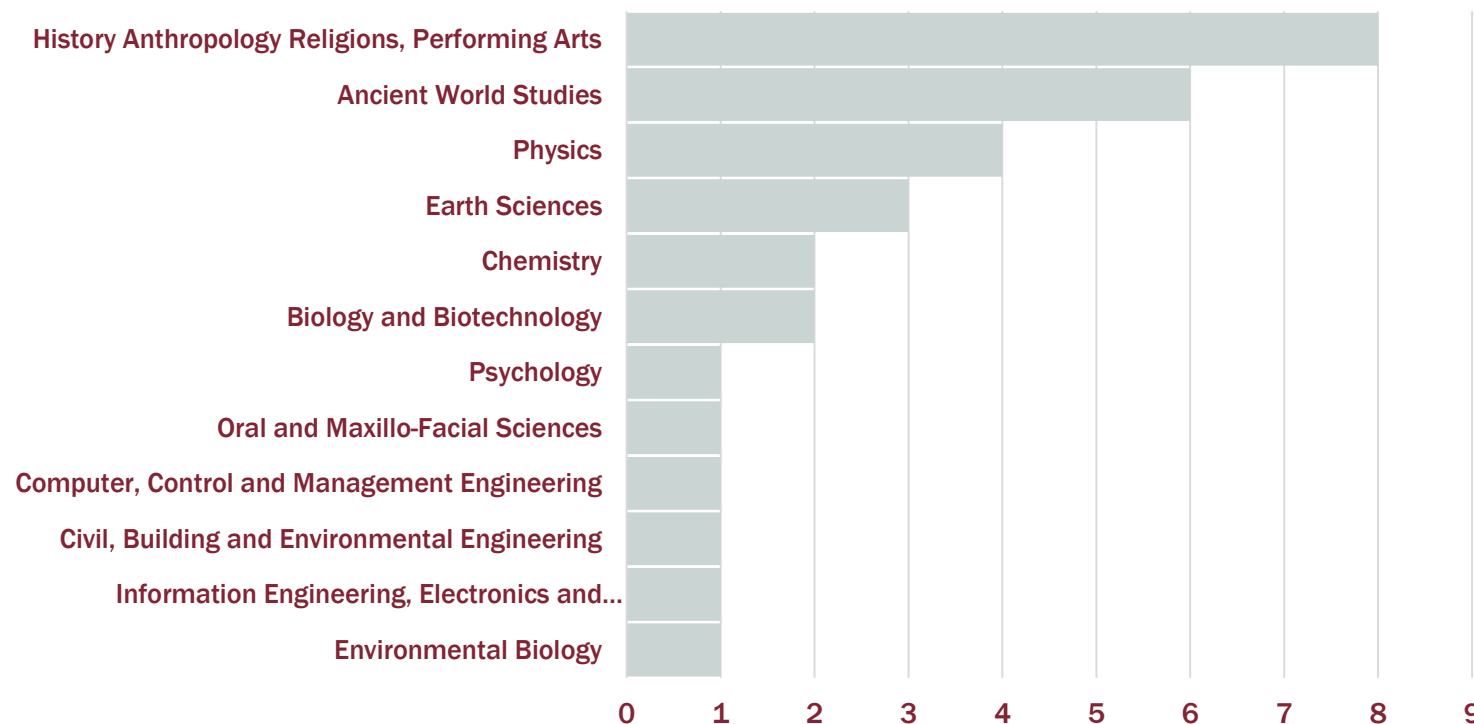
## SAPIENZA PERFORMANCE

### FUNDED PROJECTS PER PANEL (2014-2020)



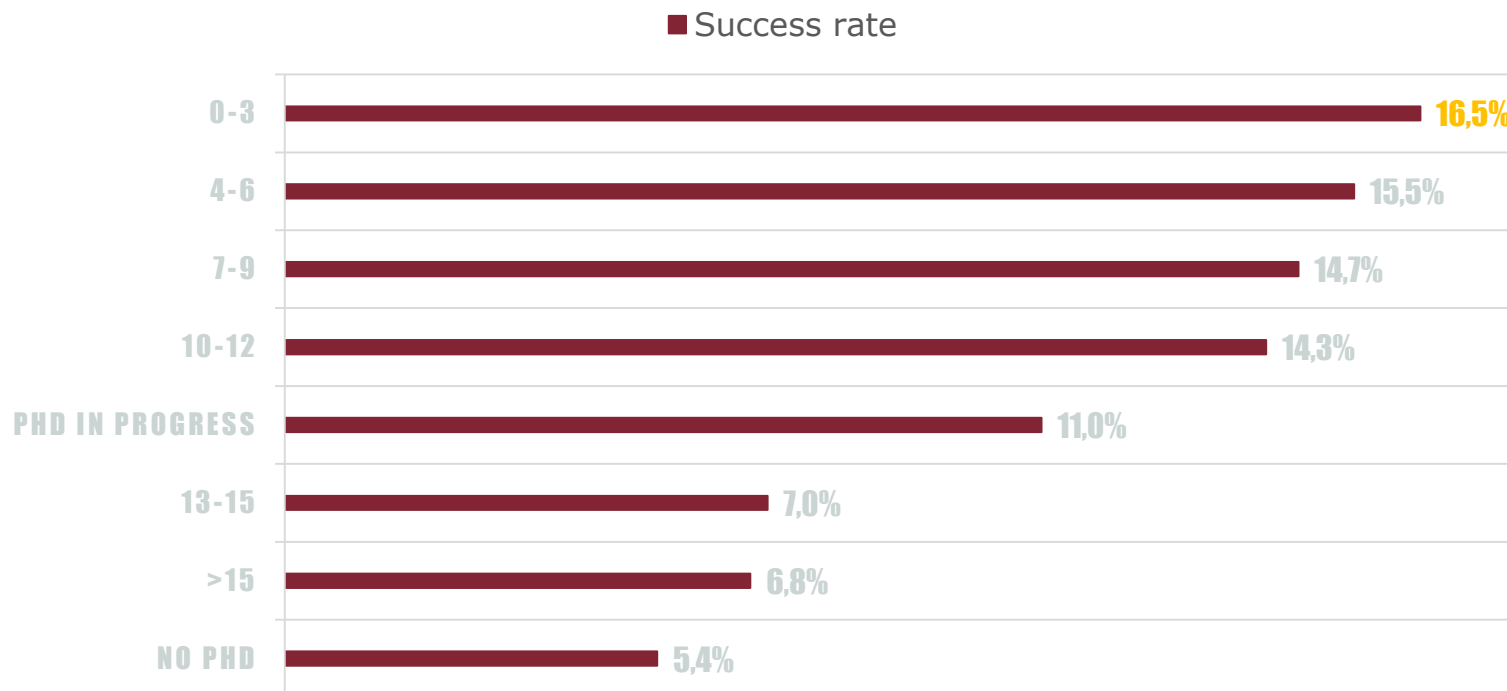
## SAPIENZA PERFORMANCE

### FUNDED PROJECTS PER DEPARTMENT (2014-2020)



## MSCA POSTDOCTORAL FELLOWSHIPS

### SUCCESS RATE/YEARS FROM PHD



Source: Net4Mobility Webinar - [https://youtu.be/Q\\_-0mINkbgI](https://youtu.be/Q_-0mINkbgI)



# THANK YOU FOR YOUR ATTENTION

## CONTACTS:

Rosa Di Stefano

Sapienza University of Rome  
International Office –  
Researchers Mobility & European Programmes Unit

[rosa.distefano@uniroma1.it](mailto:rosa.distefano@uniroma1.it)  
[ricercainternazionale@uniroma1.it](mailto:ricercainternazionale@uniroma1.it)