
**I PRINCIPALI PROGRAMMI DI
FINANZIAMENTO EUROPEO R&I:
MSCA POSTDOCTORAL
FELLOWSHIPS**

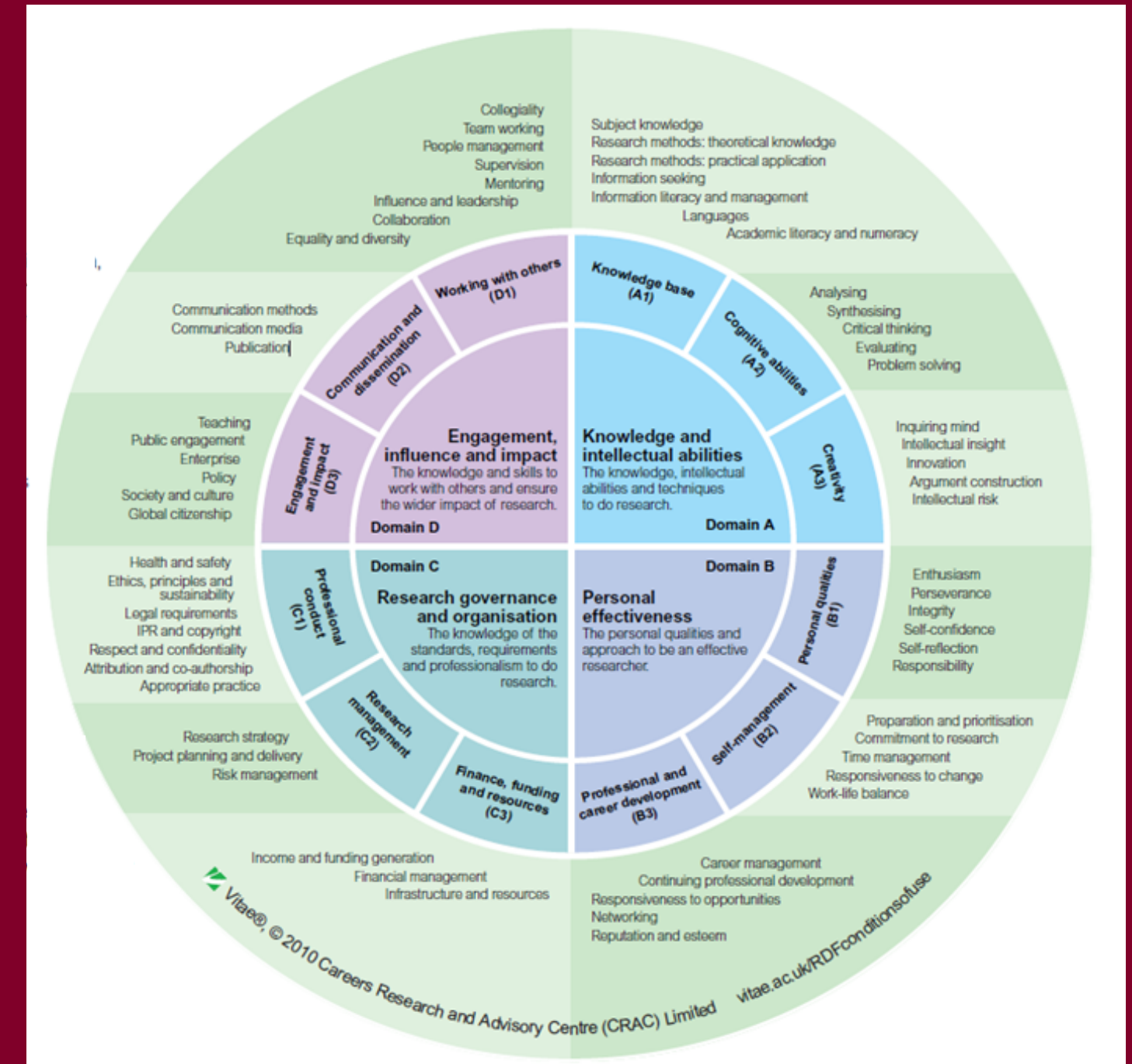


**SOFT SKILLS PER GIOVANI RICERCATORI
16 NOVEMBRE 2023**

UFFICIO SUPPORTO ALLA RICERCA INTERNAZIONALE

RESEARCHERS DEVELOPMENT

THE RESEARCHER'S DEVELOPMENT FRAMEWORK IS A PROFESSIONAL DEVELOPMENT FRAMEWORK FOR PLANNING, PROMOTING AND SUPPORTING THE PERSONAL, PROFESSIONAL AND CAREER DEVELOPMENT OF RESEARCHERS. IT ARTICULATES THE KNOWLEDGE, BEHAVIOURS AND ATTRIBUTES OF SUCCESSFUL RESEARCHERS

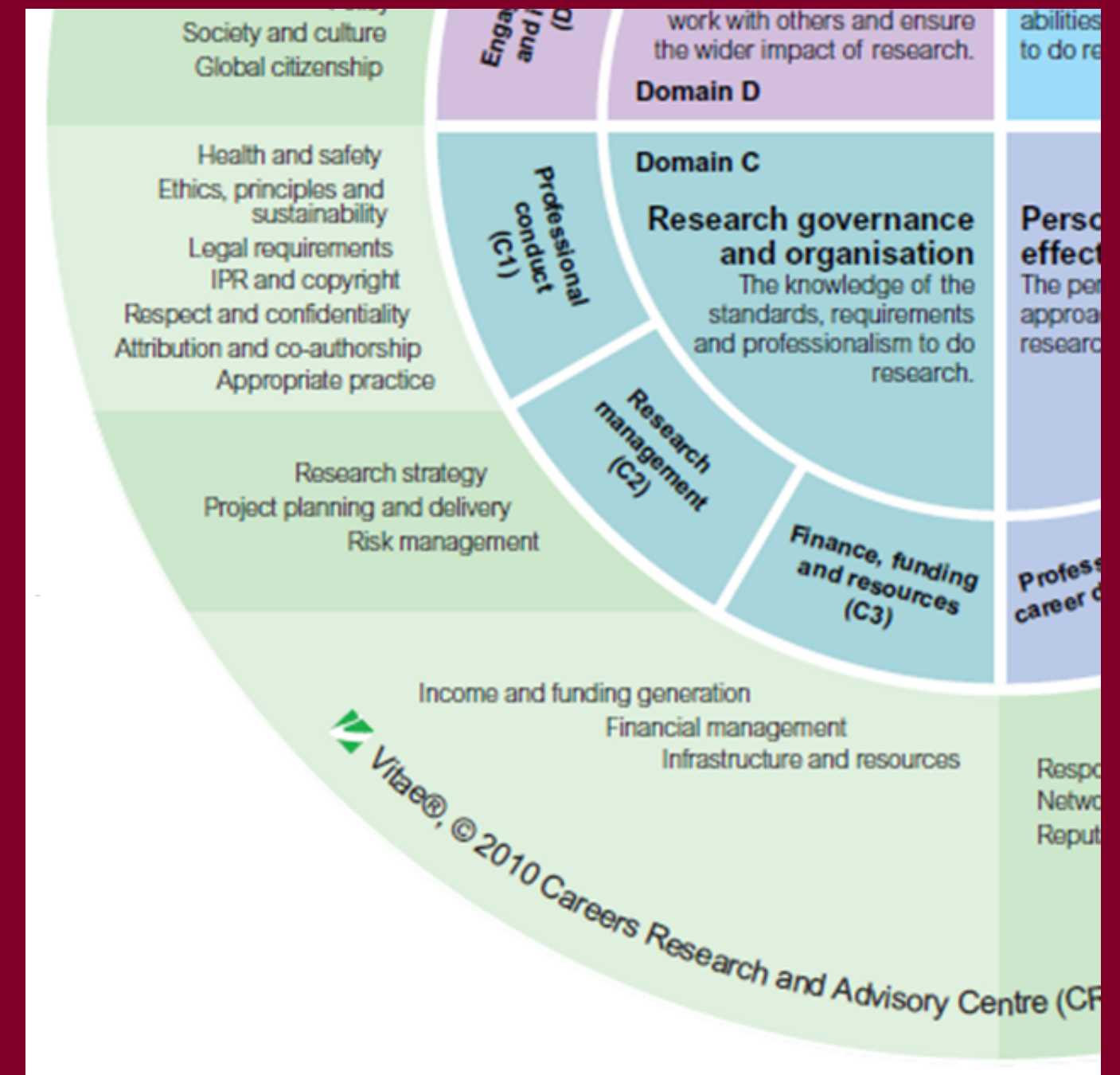


VITAE'S RESEARCHER DEVELOPMENT FRAMEWORK

RESEARCHERS DEVELOPMENT

KEY SKILLS:

PROJECT PLANNING AND DELIVERY
FUNDING GENERATION
FINANCIAL MANAGEMENT



MARIE SKLODOWSKA-CURIE PROGRAMME

Main instrument at Union-level to encourage more young women and men to **make a career in research**, promote its **attractiveness for top talents from around the world** and **retain its own researchers**

EXCELLENCE: R&I METHODOLOGIES, RESEARCH,
TRAINING & SUPERVISION

MOBILITY: GEOGRAPHICAL & BETWEEN DISCIPLINES AND
SECTORS TO DEVELOP NEW KNOWLEDGE AND SKILLS

BOTTOM-UP APPROACH: OPEN TO ALL DOMAINS OF
RESEARCH & INNOVATION



MSCA FOCUS

MSCA POSTDOCTORAL FELLOWSHIPS

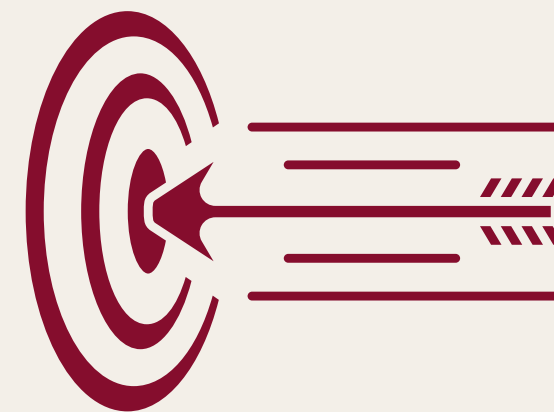


SUPPORT THE CAREER OF INDIVIDUAL RESEARCHERS WHO WISH TO CARRY OUT THEIR RESEARCH ACTIVITIES ABROAD AND ACQUIRE NEW SKILLS

Support researchers' careers and foster excellence in research

Enhance the creative and innovative potential of researchers holding a PhD

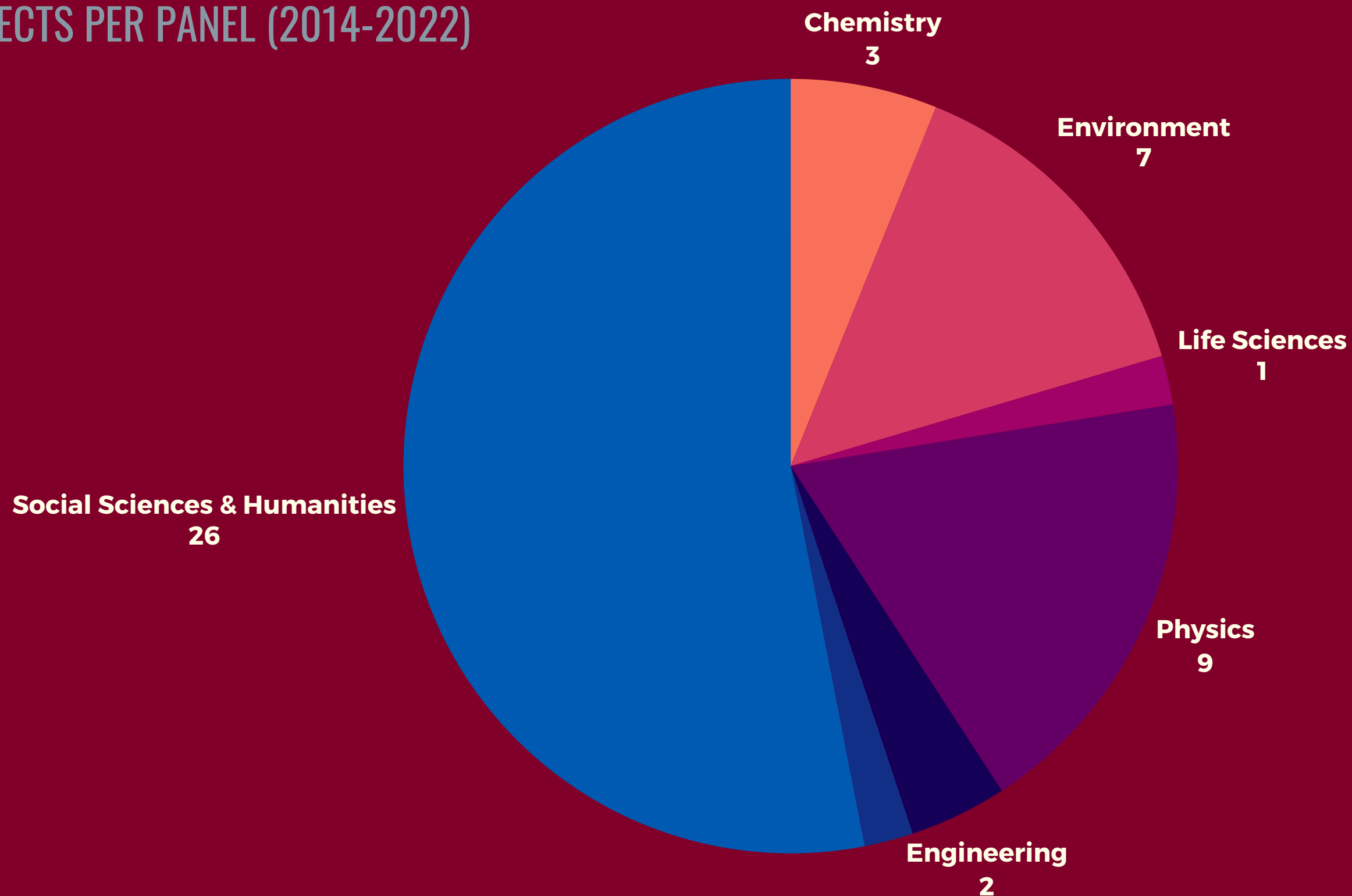
Help researchers to acquire new skills through international, interdisciplinary and inter-sectoral mobility



MSCA-PF OBJECTIVES

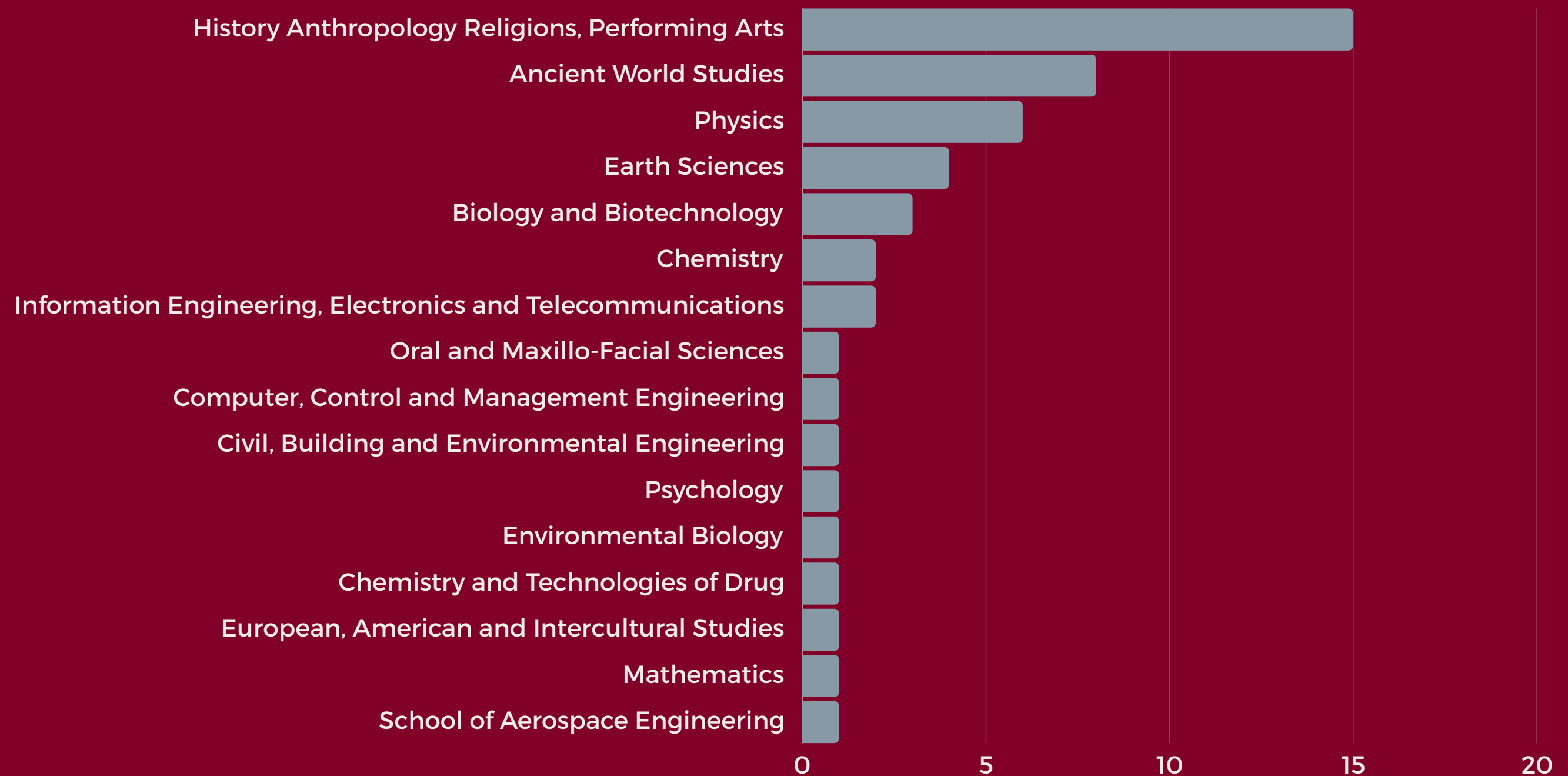
SAPIENZA'S NUMBERS

N. OF FUNDED PROJECTS PER PANEL (2014-2022)

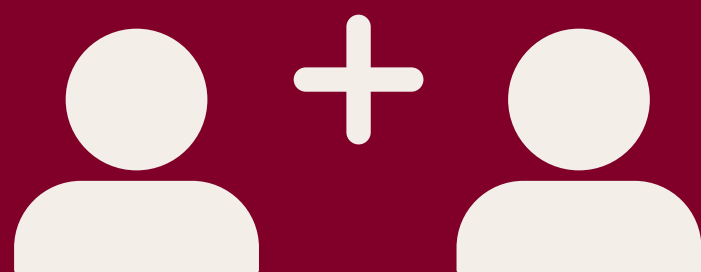


SAPIENZA'S NUMBERS

N. OF FUNDED PROJECTS PER DEPARTMENT (2014-2022)



APPLICATION PROCESS



PROPOSALS
SUBMITTED
JOINTLY BY A
RESEARCHER AND
A SUPERVISOR

SUBMISSION
TO EU

SELECTION AND
FUNDING OF THE
BEST PROPOSALS

2 TYPES OF FELLOWSHIPS



EUROPEAN FELLOWSHIPS



fellowships take place in a EU Member State or HE Associated Country



GLOBAL FELLOWSHIPS



The research is carried out in a non-associated Third Country (“outgoing phase”) and then it is concluded in a Member State or Associated Country (“return phase”)

LIST OF ASSOCIATED COUNTRIES

**ALBANIA - ARMENIA - BOSNIA AND
HERZEGOVINA - FAROE ISLANDS - GEORGIA -
ICELAND - ISRAEL - KOSOVO - MOLDOVA -
MONTENEGRO - *MOROCCO* - NORTH
MACEDONIA - NORWAY - SERBIA - TUNISIA -
TURKEY - UKRAINE - UNITED KINGDOM**



*List updated on September, 2023

ELIGIBILITY CONDITIONS



MINIMUM CONDITIONS FOR RESEARCHERS



- ANY AGE, NATIONALITY & DISCIPLINE
- IN POSSESSION OF A DOCTORAL DEGREE
- WITH MAX. 8 YEARS OF FULL TIME RESEARCH EXPERIENCE
Years of experience outside research and career breaks will not count towards the amount of research experience
- MUST NOT HAVE RESIDED IN THE COUNTRY OF THE HOST INSTITUTION FOR MORE THAN 12 MONTHS IN THE LAST 3 YEARS
For GF, the host institution of the outgoing phase

PARTICIPATING ORGANISATIONS



Universities, research institutions and research infrastructures, businesses including SMEs, and other socio-economic actors from different countries across Europe and beyond

BENEFICIARY



BE ESTABLISHED IN A EU MEMBER STATE OR ASSOCIATED COUNTRY

RECRUIT, TRAIN, SUPERVISE AND HOST THE RESEARCHER

IS RESPONSIBLE FOR THE IMPLEMENTATION OF THE ACTION

ASSOCIATED PARTNER

CAN BE ESTABLISHED ANYWHERE IN THE WORLD

CAN HOST SECONDMENTS OR THE OUTGOING PHASE OF GLOBAL FELLOWSHIPS

CANNOT RECRUIT RESEARCHERS

EXPECTED OUTCOMES



RESEARCHERS

INCREASED SET OF RESEARCH AND TRANSFERABLE SKILLS, LEADING TO IMPROVED CAREER PROSPECTS

NEW MIND-SETS AND APPROACHES FORGED THROUGH INTERDISCIPLINARY, INTERSECTORAL AND INTERNATIONAL EXPERIENCE

ENHANCED NETWORKING AND COMMUNICATION CAPACITIES WITH SCIENTIFIC PEERS, AS WELL AS WITH THE GENERAL PUBLIC

ORGANISATIONS

IMPROVED QUALITY AND RELEVANCE OF POSTDOCTORAL TRAINING AND SUPERVISION

BETTER WORKING AND EMPLOYMENT CONDITIONS FOR RESEARCHERS

INCREASED INTERNATIONALISATION, ATTRACTIVENESS AND R&I CAPACITY

CHARACTERISTICS



- DURATION OF THE ACTION: 12-24 MONTHS (EUROPEAN) OR 24-36 (GLOBAL)
- EXCELLENT AND INNOVATIVE RESEARCH CARRIED OUT JOINTLY WITH A SUPERVISOR
- MUST INCLUDE A TRAINING PLAN TO STRENGTHEN RESEARCH-RELATED AND TRANSFERABLE SKILLS
- POSSIBILITY TO BE SECONDED TO OTHER ORGANISATIONS WORLDWIDE (MAX. 8 MONTHS)
- POSSIBILITY TO REQUEST AN ADDITIONAL PERIOD TO CARRY OUT A PLACEMENT IN THE NON-ACADEMIC SECTOR (MAX 6 MONTHS)

FINANCIAL ASPECTS



The financial contribution of PF covers 100% of the action's eligible costs and it is calculated on the basis of fixed unit costs per person months



Contribution for recruited researcher per person-month

Living Allowance

€ 5.080*

Mobility Allowance

€ 600

Family Allowance

€ 660

Institutional unit contributions per person/month

Research, Training & Networking

€ 1.000

Management & Indirect costs

€ 650

***A country correction coefficient applies to the living allowance
The country coefficient of Italy is 97,4%**

TIMELINE



OPENING

MID-APRIL (every year)

DEADLINE

MID-SEPTEMBER (every year)



SOME CONTEXT...

The European Union needs a **strong, resilient, flexible** and **creative human resource base**, with the **right combination of skills** to match the future needs of the labour market, to innovate and to convert knowledge and ideas into products and services for economic and social benefit.

DETECT AND TACKLE
UPCOMING CHALLENGES

COMMUNICATE SCIENTIFIC EVIDENCE TO
POLICY-MAKERS AND THE PUBLIC AT LARGE

WORK ACROSS DISCIPLINES



**HIGHLY SKILLED
RESEARCH-BASED
HUMAN CAPITAL**
able to

YOU MUST DEMONSTRATE THAT YOU WILL ACHIEVE
THESE RESULTS THROUGH THE MSCA PROJECT

KEY ELEMENTS OF A SUCCESSFUL PROPOSAL



EXCELLENCE SECTION



THE EXCELLENCE SECTION REPRESENTS THE CORE PART OF YOUR PROJECT. HERE YOU WILL DESCRIBE THE **RESEARCH PROJECT** AND **APPROACH**, WHY THEY ARE **INNOVATIVE**, AND HOW YOU INTEND TO BOOST YOUR CAREER THROUGH THE ACQUISITION OF **NEW SKILLS**.

IT IS ALSO THE SECTION IN WHICH YOU PRESENT THE **RATIONALE** BEHIND YOUR PROPOSAL, INCLUDING YOUR **CHOICE OF SUPERVISOR**, AND WHERE YOU EXPLAIN WHY YOU MAKE A **GOOD CANDIDATE** FOR THIS FELLOWSHIP

KEY ELEMENTS OF A SUCCESSFUL PROPOSAL



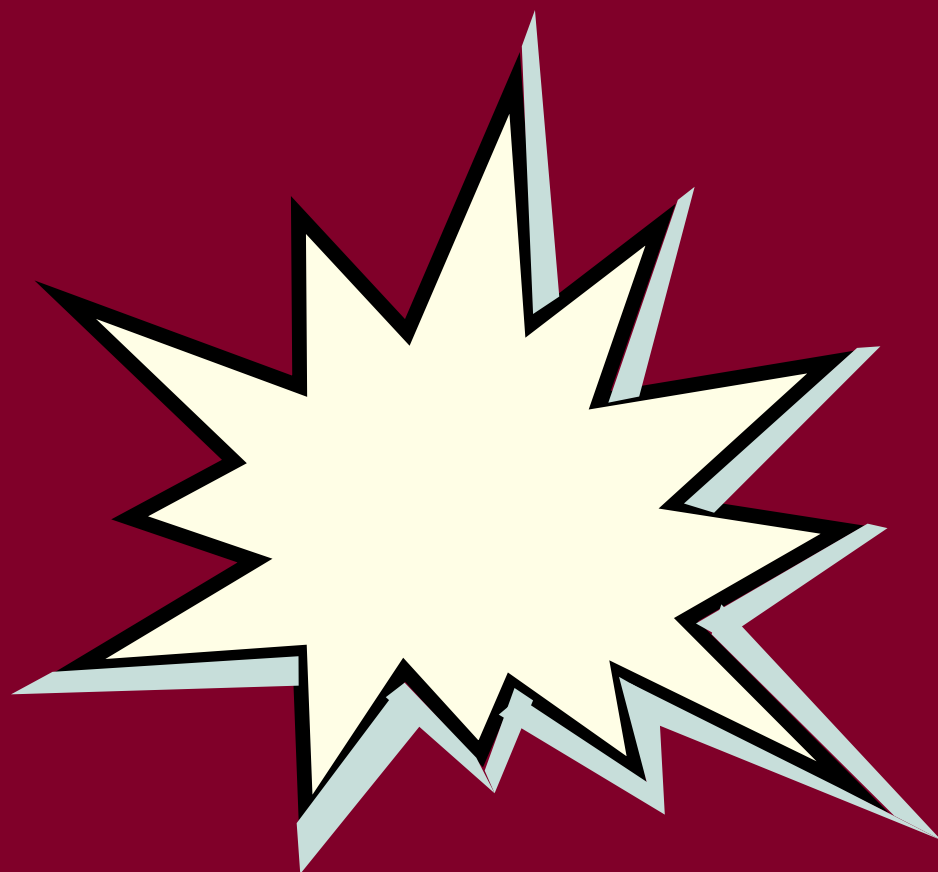
IMPACT SECTION

THE IMPACT SECTION IS THE PART IN WHICH YOU DEMONSTRATE HOW **IMPACTFUL** YOUR PROJECT IS IN THE SHORT, MEDIUM AND LONG TERM.

THE IMPACT WILL BE ASSESSED ON **TWO LEVELS**:

- ▶ YOUR SKILLS & CAREER DEVELOPMENT
- ▶ SCIENCE, SOCIETY AND THE ECONOMY

IMPORTANCE WILL ALSO BE GIVEN TO THE MEASURES YOU WILL IMPLEMENT TO **MAXIMIZE** THE PROJECT'S IMPACTS (DISSEMINATION, COMMUNICATION AND EXPLOITATION ACTIVITIES)



KEY ELEMENTS OF A SUCCESSFUL PROPOSAL



IMPLEMENTATION SECTION

THE PURPOSE OF THE IMPLEMENTATION SECTION IS TO DEMONSTRATE THE **FEASIBILITY** OF THE ACTION AND REASSURE EVALUATORS ABOUT THE SUCCESSFUL COMPLETION OF THE PROJECT.



GETTING READY FOR A MSCA-PF



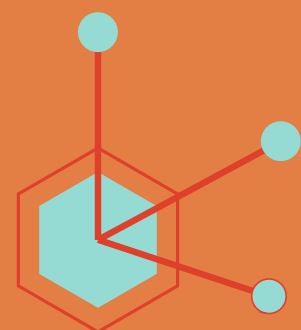
GETTING READY FOR A MSCA-PF PROPOSAL



THINK OF AN
INNOVATIVE
IDEA

THE RESEARCH MUST BE **AMBITIOUS & INNOVATIVE**.

IT MUST BE RELEVANT FOR THE RESEARCH FIELD &
MUST ANSWER A RESEARCH NEED: IT MUST AIM TO
FILL AN EXISTING GAP AND CONTRIBUTE TO THE
ADVANCEMENT OF THE STATE-OF-THE-ART.



LOOK FOR
SYNERGIES
WITH OTHER
DISCIPLINES

YOUR APPROACH MUST BE **ORIGINAL**. THE
COMBINATION OF VARIOUS TECHNIQS (INTER-
MULTIDISCIPLINARITY) IS POSITIVELY EVALUATED.

GETTING READY FOR A MSCA-PF PROPOSAL



FIND THE RIGHT
SUPERVISOR AND
HOST INSTITUTION

BEGIN TO CREATE YOUR NETWORK AND START CULTIVATING INTERNATIONAL, INTERDISCIPLINARY AND INTERSECTORAL COLLABORATIONS.

THE SUPERVISOR MUST BE COHERENT WITH THE SCIENTIFIC OBJECTIVES OF THE PROJECT AND THE TYPE OF COMPETENCES THAT YOU NEED TO ACQUIRE.

YOU MUST PROVE THAT S/HE IS THE MOST APPROPRIATE SUPERVISOR FOR YOUR PROJECT AND YOUR PERSONAL DEVELOPMENT.

GETTING READY FOR A MSCA-PF PROPOSAL



**TRAIN YOUR
GRANT
WRITING
SKILLS**

YOU CAN APPLY FOR SMALL GRANTS (PRIVATE FOUNDATIONS, UNIVERSITY INTERNAL CALLS, ETC.)...

...OR YOU CAN ASK TO BE INVOLVED IN GRANT WRITING / GRANT MANAGEMENT OF SENIOR RESEARCHERS.

WHEN READY TO SUBMIT YOUR MSCA-PF APPLICATION YOU CAN ATTEND THE GRANT WRITING LAB ORGANISED BY SAPIENZA FOR RESEARCHERS WHO ARE SUBMITTING A MSCA-PF PROPOSAL WITH SAPIENZA AS HOST INSTITUTION.

GETTING READY FOR A MSCA-PF PROPOSAL



YOU SHOULD CONVINCE EVALUATORS THAT YOU SHOULD BE GRANTED A MSCA POSTDOCTORAL FELLOWSHIP.

YOU MUST DEMONSTRATE THAT YOU HAVE THE RIGHT COMPETENCES TO IMPLEMENT SUCCESSFULLY THE PROPOSED RESEARCH AND THAT YOU CAN TAKE UP THE NEW SKILLS AND KNOWLEDGE ACQUIRED DURING THE FELLOWSHIP TO BECOME MORE INDEPENDENT IN YOUR FIELD.

GETTING READY FOR A MSCA-PF PROPOSAL



YOU SHOULD PLAN YOUR APPLICATION TO MSCA-PF WELL IN ADVANCE.



PLAN YOUR
TIME WISELY

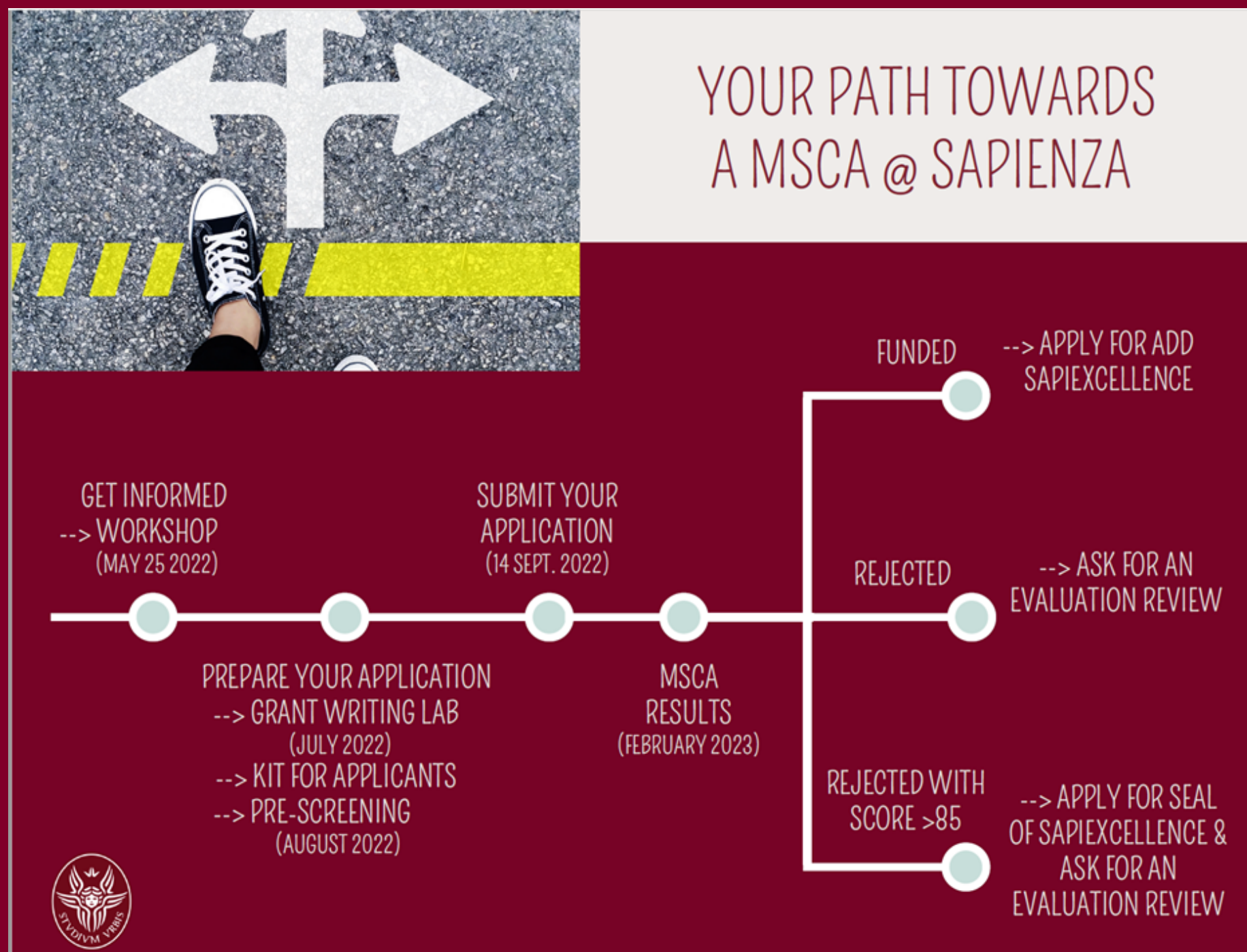
CONSIDER THE TIME NEEDED TO DEVELOP A STRONG RESEARCH IDEA AND TO GET IN CONTACT WITH YOUR POTENTIAL SUPERVISOR AND HOST INSTITUTION.

IN TERMS OF PROPOSAL WRITING, GENERALLY IT TAKES AROUND 2 MONTHS TO WRITE A (GOOD) PROPOSAL.

YOU ALSO NEED TO PLAN SOME TIME FOR REVISION (YOU NEED TO READ YOUR PROPOSAL MULTIPLE TIMES BEFORE SUBMISSION; ALSO ASK PEERS TO READ IT).

FINALLY, PROPOSAL WRITING USUALLY HAPPEN DURING THE HOLIDAY SEASON (JULY/AUGUST), THEREFORE HOST INSTITUTIONS AND SUPERVISORS MIGHT ANSWER SLOWER THAN USUAL TO YOUR REQUESTS.

GETTING READY FOR A MSCA-PF PROPOSAL



THANK YOU FOR YOUR ATTENTION

**SAPIENZA RESEARCH INTERNATIONAL OFFICE
RESEARCHERS' MOBILITY AND EUROPEAN
PROGRAMMES UNIT**

CONTACTS

Rosa Cecilia Di Stefano



email: rosa.distefano@uniroma1.it



tel.: 06-49910719